

For Release: Wednesday, April 22, 2026

Contact: Virginia Works
Economic Information & Analytics Division
(804) 786-7496
LMI@viriniaworks.gov

Follow us on X: [@VirginiaLMI](https://twitter.com/VirginiaLMI).

Virginia's Latest Unemployment Insurance Weekly Initial Claims at 3,774; Continued Claims at 19,270

RICHMOND— Virginia Works' Economic Information and Analytics Division, which serves as the Commonwealth's official source for labor market and workforce data, reported that that 3,774 unemployment insurance weekly **initial claims** were filed during the week ending April 11, 2026. The claims were filed with the Virginia Employment Commission, which administers the Commonwealth's Unemployment Insurance program. This is 48.2 percent higher than last week's 2,547 claims and 15.4 percent higher than the comparable week of last year (3,270). Nearly 78 percent of claimants self-reported an employer which correlates to an associated industry. Based on this reporting, the top five industries (75 percent) were Manufacturing (1,196); Professional, Scientific, and Technical Services (319); Administrative and Support and Waste Management (252); Health Care and Social Assistance (218); and Retail Trade (157).

Continued weeks' claims (19,270) were 0.1 percent lower than last week (19,280) and were 4.4 percent higher than the comparable week of last year (18,459). Nearly 92 percent of claimants self-reported an employer which correlates to an associated industry. Based on this reporting, the top five industries (60 percent) were Professional, Scientific, and Technical Services (3,799); Administrative and Support and Waste Management (2,258); Health Care and Social Assistance (1,729); Retail Trade (1,443); and Manufacturing (1,343).

Significant Layoffs and Announcements are available at the following websites:

[WARN Notices | Virginia Works](#)

[Announcements | Virginia Economic Development Partnership](#)

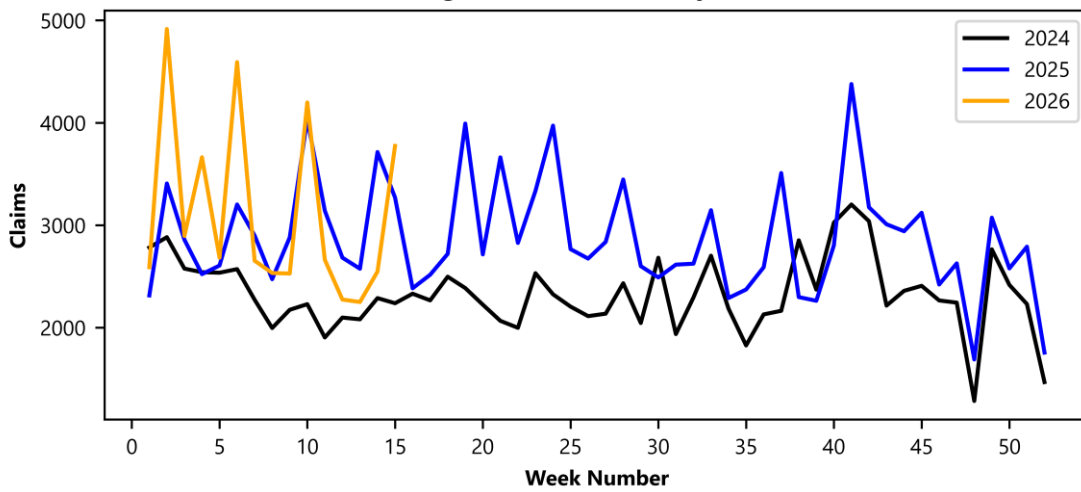
(more)

Richmond, VA

Unemployment Claims Activity Comparison

	Week Ending 04/11/2026	Week Ending 04/04/2026	Week Ending 03/28/2026	Last Year 04/12/2025
Initial Claims	3,774	2,547	2,250	3,270
Initial Change (%)	+1,227 (+48.2%)	+297 (+13.2%)	-24 (-1.1%)	+504 (+15.4%)
Continued Claims	19,270	19,280	19,745	18,459
Continued Change (%)	-10 (-0.1%)	-465 (-2.4%)	-847 (-4.1%)	+811 (+4.4%)

Virginia Initial Claims by Week



Virginia Continued Claims by Week

