

For Release: Thursday, July 10, 2025

Contact: Virginia Works
Economic Information & Analytics Division
(804) 786-7496
LMI@viriniaworks.gov

Follow us on X (formerly Twitter): [@VirginiaLMI](https://twitter.com/VirginiaLMI).

Virginia's Latest Unemployment Insurance Weekly Initial Claims at 2,837; Continued Claims at 20,422

RICHMOND— Virginia Works announced today that 2,837 unemployment insurance weekly **initial claims** were filed during the week ending July 05, 2025, which is 6.1 percent higher than last week's 2,674 claims and 32.8 percent higher than the comparable week of last year (2,136). Nearly 80 percent of claimants self-reported an employer which correlates to an associated industry. Based on this reporting, the top five industries (64 percent) were Professional, Scientific, and Technical Services (405); Manufacturing (322); Administrative and Support and Waste Management (253); Health Care and Social Assistance (220); and Retail Trade (165).

Continued weeks claims (20,422) were 0.8 percent lower than last week (20,587) and were 24.0 percent higher than the comparable week of last year (16,471). Nearly 93 percent of claimants self-reported an employer which correlates to an associated industry. Based on this reporting, the top five industries (62 percent) were Professional, Scientific, and Technical Services (4,507); Administrative and Support and Waste Management (2,362); Health Care and Social Assistance (1,877); Retail Trade (1,493); and Manufacturing (1,398).

Significant Layoffs and Announcements are available at the following websites:

[WARN Notices | Virginia Works](#)

[Announcements | Virginia Economic Development Partnership](#)

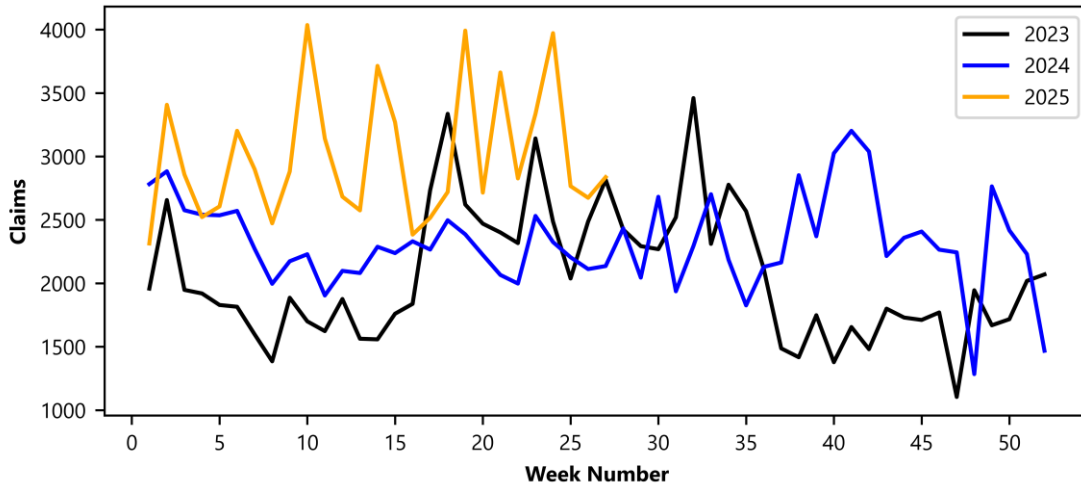
(more)

Richmond, VA

Initial Claims – Comparison of Unemployment Insurance Activity

	Week Ending 07/05/2025	Week Ending 06/28/2025	Week Ending 06/21/2025	Last Year 07/06/2024
Initial Claims	2,837	2,674	2,766	2,136
Initial Change (%)	+163 (+6.1%)	-92 (-3.3%)	-1,206 (-30.4%)	+701 (+32.8%)
Continued Claims	20,422	20,587	21,399	16,471

Virginia Initial Claims by Week



Virginia Continued Claims by Week

