

**For Release:** Thursday, July 17, 2025

**Contact:** Virginia Works  
Economic Information & Analytics Division  
(804) 786-7496  
[LMI@viriniaworks.gov](mailto:LMI@viriniaworks.gov)

Follow us on X (formerly Twitter): [@VirginiaLMI](https://twitter.com/VirginiaLMI).

### **Virginia's Latest Unemployment Insurance Weekly Initial Claims at 3,446; Continued Claims at 21,060**

**RICHMOND**— Virginia Works announced today that 3,446 unemployment insurance weekly **initial claims** were filed during the week ending July 12, 2025, which is 21.5 percent higher than last week's 2,837 claims and 41.6 percent higher than the comparable week of last year (2,433). Nearly 69 percent of claimants self-reported an employer which correlates to an associated industry. Based on this reporting, the top five industries (61 percent) were Professional, Scientific, and Technical Services (438); Manufacturing (266); Administrative and Support and Waste Management (260); Health Care and Social Assistance (246); and Retail Trade (222).

**Continued weeks claims** (21,060) were 3.1 percent higher than last week (20,422) and were 24.7 percent higher than the comparable week of last year (16,886). Nearly 93 percent of claimants self-reported an employer which correlates to an associated industry. Based on this reporting, the top five industries (62 percent) were Professional, Scientific, and Technical Services (4,667); Administrative and Support and Waste Management (2,422); Health Care and Social Assistance (1,929); Manufacturing (1,521); and Retail Trade (1,520).

**Significant Layoffs and Announcements are available at the following websites:**

[WARN Notices | Virginia Works](#)

[Announcements | Virginia Economic Development Partnership](#)

(more)

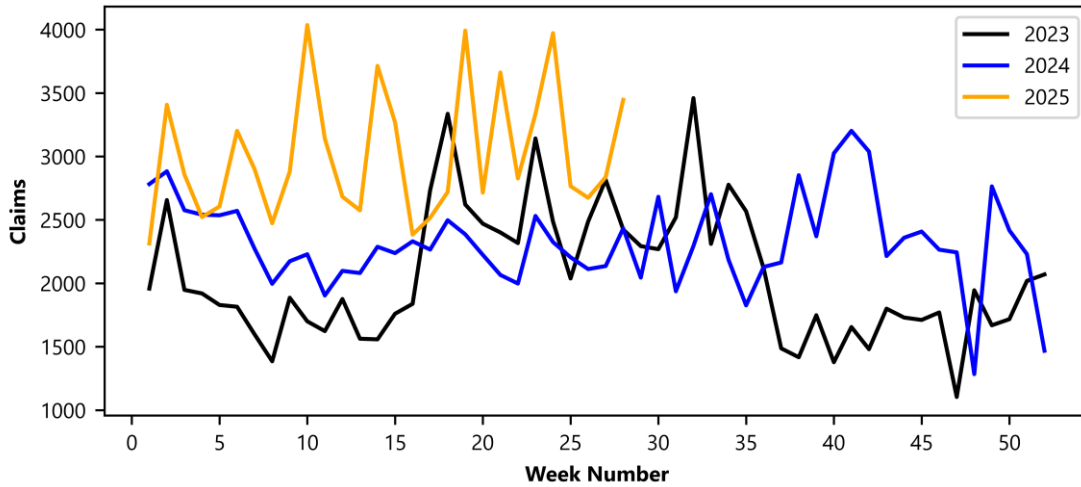
**Richmond, VA**

Page 1 of 3

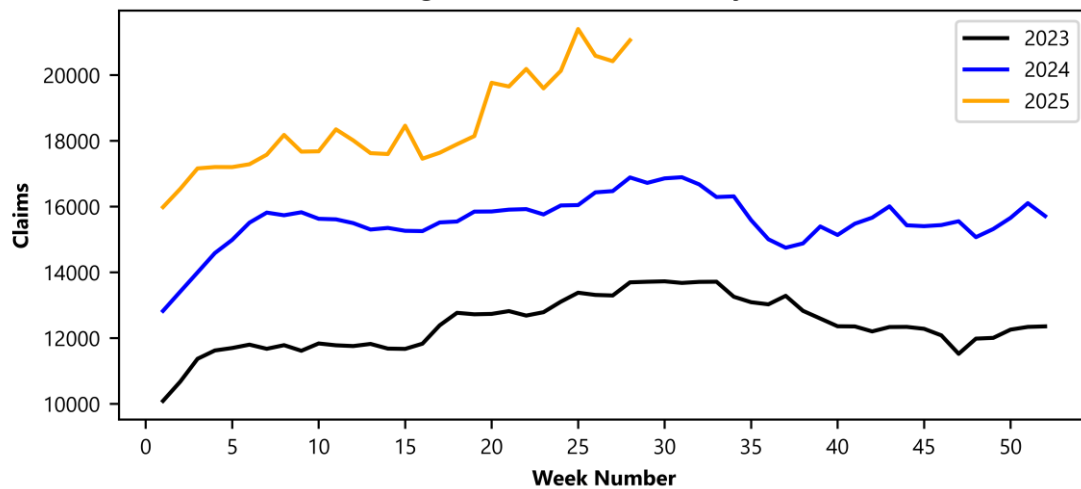
### Initial Claims – Comparison of Unemployment Insurance Activity

	Week Ending 07/12/2025	Week Ending 07/05/2025	Week Ending 06/28/2025	Last Year 07/13/2024
Initial Claims	3,446	2,837	2,674	2,433
Initial Change (%)	+609 (+21.5%)	+163 (+6.1%)	-92 (-3.3%)	+1,013 (+41.6%)
Continued Claims	21,060	20,422	20,587	16,886

**Virginia Initial Claims by Week**



**Virginia Continued Claims by Week**



# Virginia Continued Weeks Claimed as a Percentage of Total Workforce

A person who has already filed an initial claim and who has experienced a week of unemployment files a continued claim to claim benefits for that week of unemployment. On a weekly basis, continued claims reflect a good approximation of the current number of insured unemployed workers filing for UI benefits, and are a good indicator of labor market conditions. While continued claims are not a leading indicator, they provide confirming evidence of the direction of the economy.

The color-coded map below shows the distribution of this week's continued claims in Virginia's counties and cities, expressed as a percentage of each locality's labor force. This approach provides a more meaningful comparison across areas by adjusting for differences in labor force size. Yellow represents a lower percentage of continued claims relative to the labor force, while progressively darker shades transitioning from yellow to green and dark green indicate higher percentages. The legend at the bottom shows the color spectrum and its corresponding percentage ranges.

