

For Release: Wednesday, June 18, 2025

Contact: Virginia Works
Economic Information & Analytics Division
(804) 786-7496
LMI@viriniaworks.gov

Follow us on X (formerly Twitter): [@VirginiaLMI](https://twitter.com/VirginiaLMI).

Virginia's Latest Unemployment Insurance Weekly Initial Claims at 3,972; Continued Claims at 20,128

RICHMOND— Virginia Works announced today that 3,972 unemployment insurance weekly **initial claims** were filed during the week ending June 14, 2025, which is 19.1 percent higher than last week's 3,335 claims and 70.8 percent higher than the comparable week of last year (2,325). Nearly 83 percent of claimants self-reported an employer which correlates to an associated industry. Based on this reporting, the top five industries (73 percent) were Manufacturing (1,209); Professional, Scientific, and Technical Services (427); Health Care and Social Assistance (270); Administrative and Support and Waste Management (227); and Accommodation and Food Services (218).

Continued weeks claims (20,128) were 2.7 percent higher than last week (19,596) and were 25.5 percent higher than the comparable week of last year (16,034). Nearly 92 percent of claimants self-reported an employer which correlates to an associated industry. Based on this reporting, the top five industries (61 percent) were Professional, Scientific, and Technical Services (4,313); Administrative and Support and Waste Management (2,398); Health Care and Social Assistance (1,729); Retail Trade (1,489); and Manufacturing (1,399).

Significant Layoffs and Announcements are available at the following websites:

[WARN Notices | Virginia Works](#)

[Announcements | Virginia Economic Development Partnership](#)

(more)

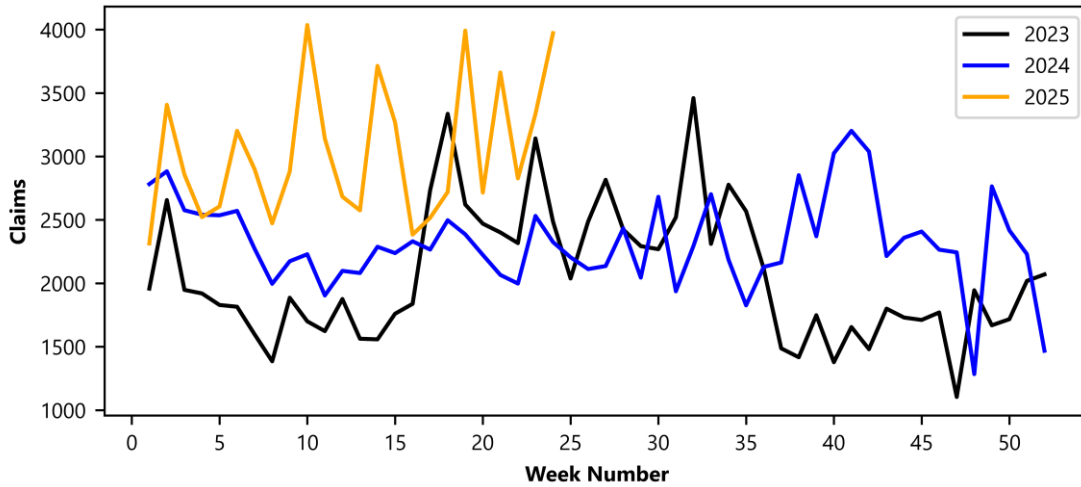
Richmond, VA

Page 1 of 3

Initial Claims – Comparison of Unemployment Insurance Activity

	Week Ending 06/14/2025	Week Ending 06/07/2025	Week Ending 05/31/2025	Last Year 06/15/2024
Initial Claims	3,972	3,335	2,827	2,325
Initial Change (%)	+637 (+19.1%)	+508 (+18.0%)	-835 (-22.8%)	+1,647 (+70.8%)
Continued Claims	20,128	19,596	20,185	16,034

Virginia Initial Claims by Week



Virginia Continued Claims by Week

