

**For Release:** Thursday, April 03, 2025

**Contact:** Virginia Works  
Economic Information & Analytics Division  
(804) 786-7496  
[LMI@viriniaworks.gov](mailto:LMI@viriniaworks.gov)

Follow us on X (formerly Twitter): [@VirginiaLMI](https://twitter.com/VirginiaLMI).

## Virginia's Latest Unemployment Insurance Weekly Initial Claims Down at 2,575; Continued Claims at 17,625

**RICHMOND**— Virginia Works announced today that 2,575 unemployment insurance weekly **initial claims** were filed during the week ending March 29, 2025, which is 4.0 percent lower than last week's 2,683 claims and 23.7 percent higher than the comparable week of last year (2,081). Nearly 81 percent of claimants self-reported an associated industry; of those reported, the top five industries (60 percent) were Professional, Scientific, and Technical Services (435); Administrative and Support and Waste Management (255); Health Care and Social Assistance (192); Retail Trade (187); and Manufacturing (146).

**Continued weeks claims** (17,625) were 2.2 percent lower than last week (18,013) and were 15.2 percent higher than the comparable week of last year (15,302). Nearly 92 percent of claimants self-reported an associated industry; of those reported, the top five industries (59 percent) were Professional, Scientific, and Technical Services (3,281); Administrative and Support and Waste Management (2,111); Health Care and Social Assistance (1,572); Retail Trade (1,410); and Manufacturing (1,250).

**Significant Layoffs and Announcements are available at the following websites:**

[WARN Notices | Virginia Works](#)

[Announcements | Virginia Economic Development Partnership](#)

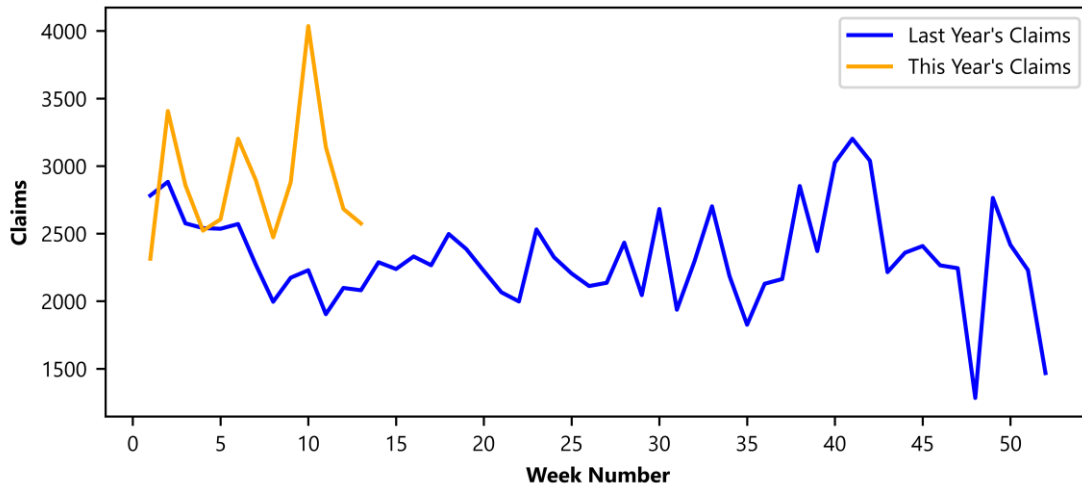
(more)

**Richmond, VA**

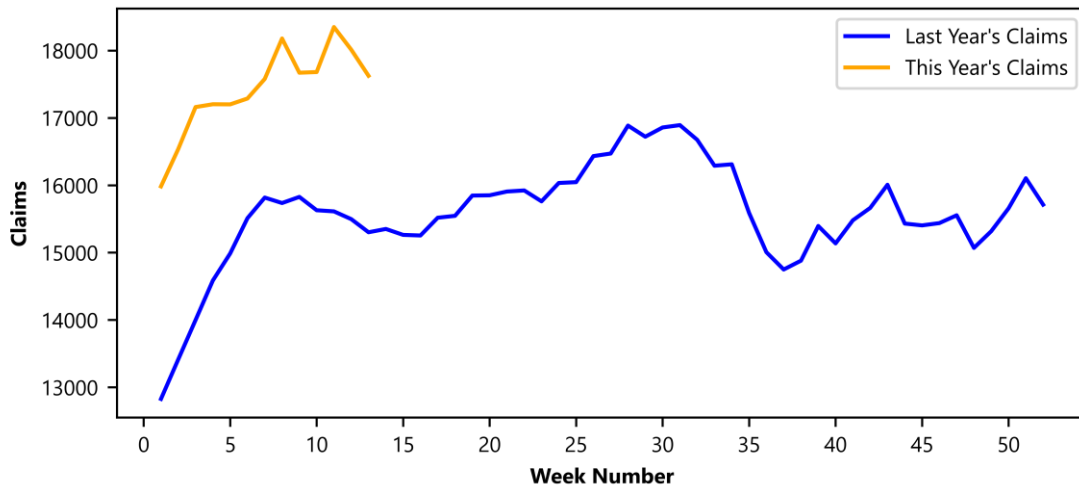
### Initial Claims – Comparison of Unemployment Insurance Activity

	Week Ending 03/29/2025	Week Ending 03/22/2025	Week Ending 03/15/2025	Last Year 03/30/2024
Initial Claims	2,575	2,683	3,141	2,081
Initial Change (%)	-108 (-4.0%)	-458 (-14.6%)	-895 (-22.2%)	+494 (+23.7%)
Continued Claims	17,625	18,013	18,349	15,302

**Virginia Initial Claims by Week: Previous and Current year**



**Virginia Continued Claims by Week: Previous and Current year**





### Initial Claims for All States

In the week ending March 29, the advance figure for seasonally adjusted initial claims was 219,000, a decrease of 6,000 from the previous week's revised level. The previous week's level was revised up by 1,000 from 224,000 to 225,000. The advance number of actual initial claims under state programs, unadjusted, totaled 200,057 in the week ending March 29, an increase of 157 (or 0.1 percent) from the previous week. The seasonal factors had expected an increase of 5,403 (or 2.7 percent) from the previous week. There were 197,349 initial claims in the comparable week in 2024.

<b>Initial State Claims (5 largest decreases)</b> (Not Seasonally Adjusted)			
State	Initial Claims (this week)	Initial Claims (prior week)	Change
Texas	16,670	17,469	-799
Massachusetts	4,210	4,879	-669
Arizona	3,198	3,777	-579
New Jersey	7,730	8,264	-534
Maryland	2,074	2,552	-478

<b>Initial State Claims (5 largest increases)</b> (Not Seasonally Adjusted)			
State	Initial Claims (this week)	Initial Claims (prior week)	Change
Kentucky	5,261	2,448	2,813
Illinois	10,275	8,954	1,321
Iowa	3,133	2,112	1,021
Wisconsin	4,739	3,966	773
California	41,573	40,891	682

## All States Initial Weeks Claimed

An initial claim is a claim filed by an unemployed individual after a separation from an employer. The count of U.S. initial claims for unemployment insurance is a leading economic indicator because it is an indication of emerging labor market conditions in the country.

Below is a color-coded map illustrating the percentage change in initial claims from last week to this week across all states nationwide, derived from the latest U.S. Department of Labor Weekly Claims News Release (<https://www.dol.gov/ui/data.pdf>). Green denotes a reduction in continued claims from last week, thus showing improvement, with progressively darker shades of green signifying greater improvement. Purple denotes an increase in continued claims from last week, thus showing deterioration, with progressively darker shades of purple signifying greater deterioration. Very light green, purple or white indicates minimal change from last week. The legend at the bottom provides the color spectrum along with its corresponding percentage value.

