

For Release: Thursday, March 06, 2025

Contact: Virginia Works
Economic Information & Analytics Division
(804) 786-7496
LMI@viriniaworks.gov

Follow us on X (formerly Twitter): [@VirginiaLMI](https://twitter.com/VirginiaLMI).

Virginia's Latest Unemployment Insurance Weekly Initial Claims Up at 2,881; Continued Claims at 17,671

RICHMOND— Virginia Works announced today that 2,881 unemployment insurance weekly **initial claims** were filed during the week ending March 01, 2025, which is 16.5 percent higher than last week's 2,473 claims and 32.5 percent higher than the comparable week of last year (2,174). Nearly 72 percent of claimants self-reported an associated industry; of those reported, the top five industries (60 percent) were Professional, Scientific, and Technical Services (390); Administrative and Support and Waste Management (218); Retail Trade (217); Health Care and Social Assistance (176); and Manufacturing (162).

Continued weeks claims (17,671) were 2.8 percent lower than last week (18,179) and were 11.7 percent higher than the comparable week of last year (15,827). Nearly 92 percent of claimants self-reported an associated industry; of those reported, the top five industries (58 percent) were Professional, Scientific, and Technical Services (2,822); Administrative and Support and Waste Management (2,138); Construction (1,576); Health Care and Social Assistance (1,523); and Manufacturing (1,354).

Significant Layoffs and Announcements are available at the following websites:

[WARN Notices | Virginia Works](#)

[Announcements | Virginia Economic Development Partnership](#)

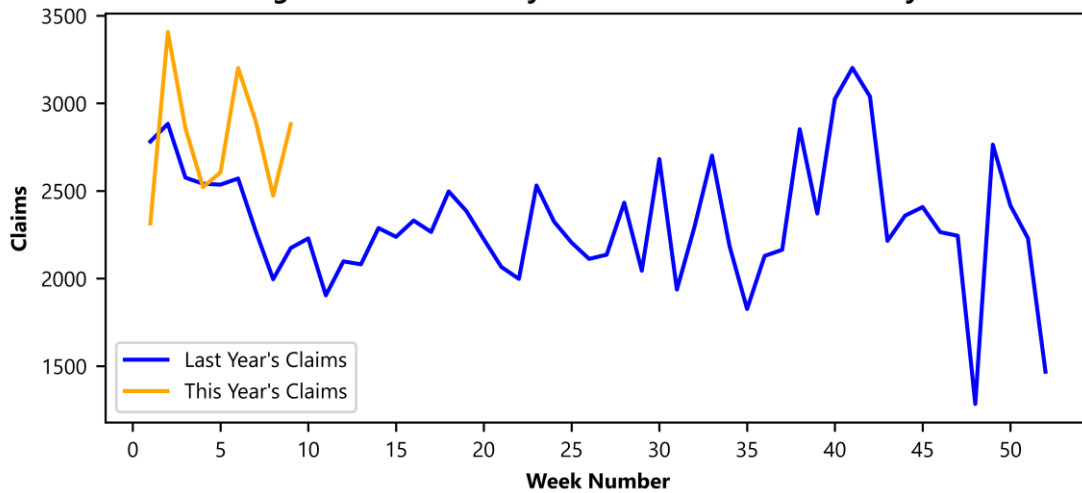
(more)

Richmond, VA

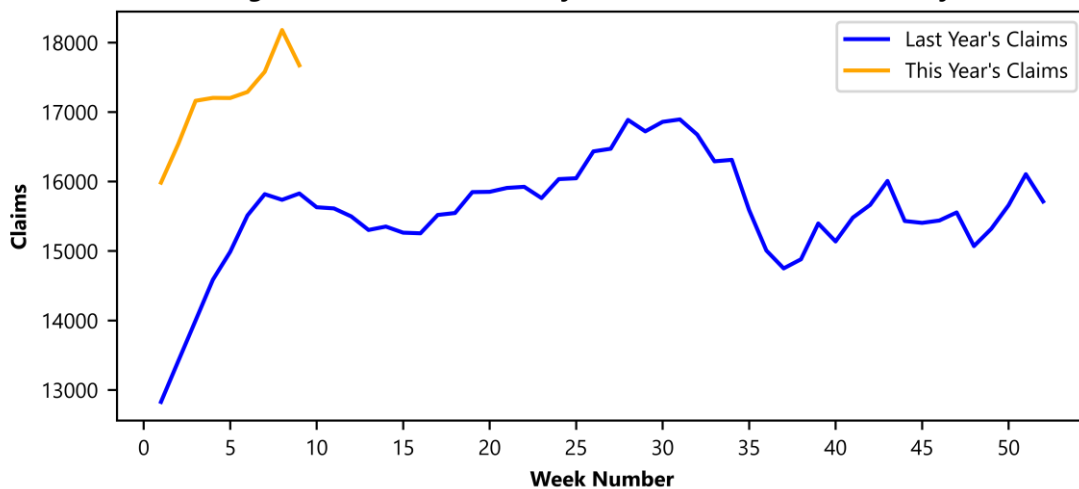
Initial Claims – Comparison of Unemployment Insurance Activity

	Week Ending 03/01/2025	Week Ending 02/22/2025	Week Ending 02/15/2025	Last Year 03/02/2024
Initial Claims	2,881	2,473	2,899	2,174
Initial Change (%)	+408 (+16.5%)	-426 (-14.7%)	-303 (-9.5%)	+707 (+32.5%)
Continued Claims	17,671	18,179	17,579	15,827

Virginia Initial Claims by Week: Previous and Current year



Virginia Continued Claims by Week: Previous and Current year

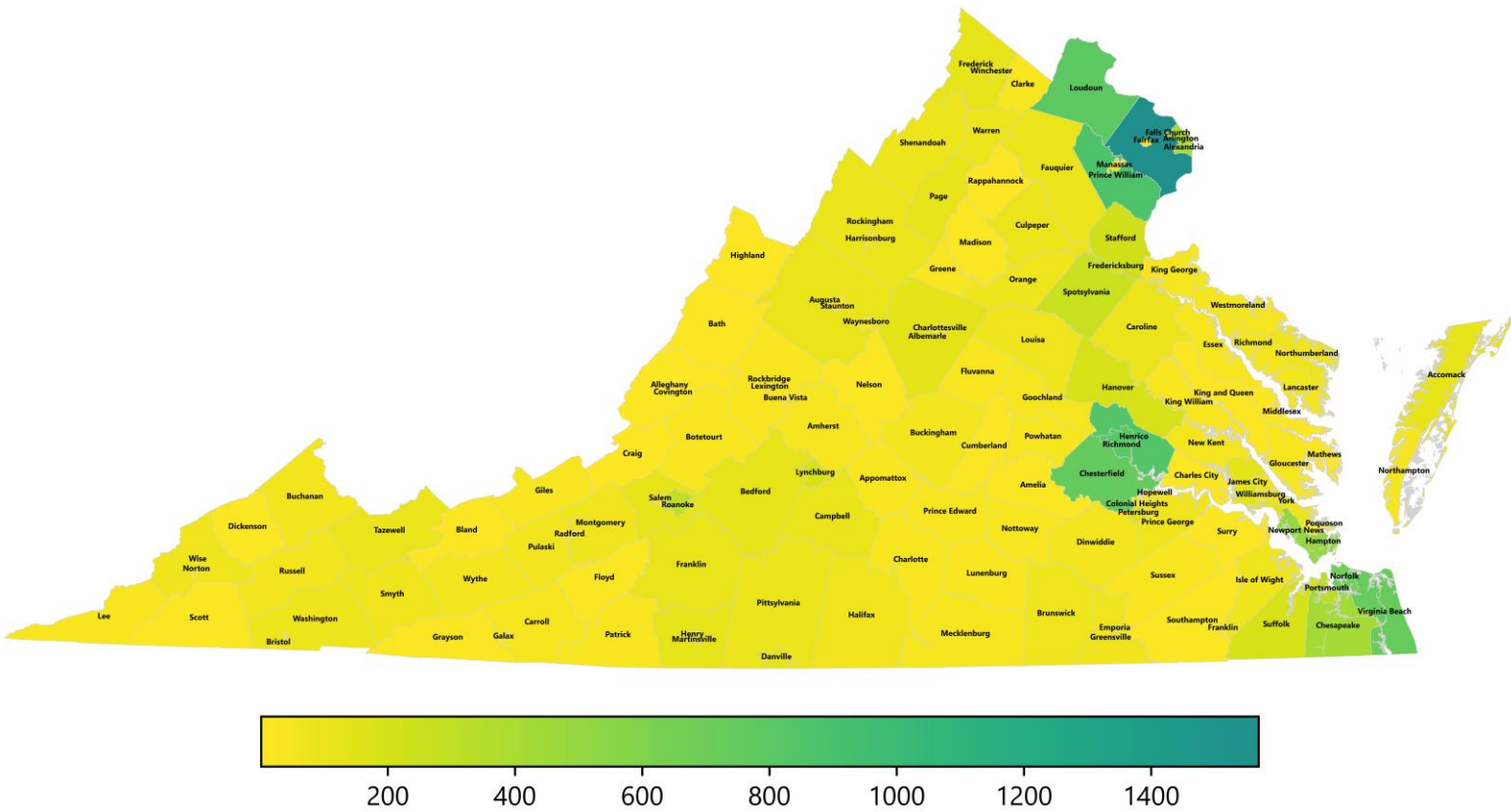


Virginia Continued Weeks Claimed

A person who has already filed an initial claim and who has experienced a week of unemployment files a continued claim to claim benefits for that week of unemployment. On a weekly basis, continued claims reflect a good approximation of the current number of insured unemployed workers filing for UI benefits, and are a good indicator of labor market conditions. While continued claims are not a leading indicator, they provide confirming evidence of the direction of the economy.

The color-coded map below shows the distribution of this week's continued claims for Virginia's counties and cities.

Yellow represents low numbers, while progressively darker shades transitioning from yellow to green and dark green signify increasing numbers of continued claims. The legend located at the bottom provides the color spectrum and its corresponding count of continued claims.



Initial Claims for All States

In the week ending March 1, the advance figure for seasonally adjusted initial claims was 221,000, a decrease of 21,000 from the previous week's unrevised level of 242,000. The advance number of actual initial claims under state programs, unadjusted, totaled 224,689 in the week ending March 1, an increase of 3,833 (or 1.7 percent) from the previous week. The seasonal factors had expected an increase of 25,158 (or 11.4 percent) from the previous week. There were 214,424 initial claims in the comparable week in 2024.

Initial State Claims (5 largest decreases) (Not Seasonally Adjusted)			
State	Initial Claims (this week)	Initial Claims (prior week)	Change
Massachusetts	5,267	9,256	-3,989
Rhode Island	987	2,990	-2,003
Michigan	5,627	7,559	-1,932
Illinois	10,057	11,066	-1,009
New Jersey	8,832	9,761	-929

Initial State Claims (5 largest increases) (Not Seasonally Adjusted)			
State	Initial Claims (this week)	Initial Claims (prior week)	Change
New York	30,166	14,538	15,628
Texas	16,147	14,541	1,606
Kentucky	2,921	2,023	898
Arkansas	1,417	870	547
New Hampshire	896	400	496

All States Initial Weeks Claimed

An initial claim is a claim filed by an unemployed individual after a separation from an employer. The count of U.S. initial claims for unemployment insurance is a leading economic indicator because it is an indication of emerging labor market conditions in the country.

Below is a color-coded map illustrating the percentage change in initial claims from last week to this week across all states nationwide, derived from the latest U.S. Department of Labor Weekly Claims News Release (<https://www.dol.gov/ui/data.pdf>). Green denotes a reduction in continued claims from last week, thus showing improvement, with progressively darker shades of green signifying greater improvement. Purple denotes an increase in continued claims from last week, thus showing deterioration, with progressively darker shades of purple signifying greater deterioration. Very light green, purple or white indicates minimal change from last week. The legend at the bottom provides the color spectrum along with its corresponding percentage value.

