

**For Release:** Thursday, February 27, 2025

**Contact:** Virginia Works  
Economic Information & Analytics Division  
(804) 786-7496  
[LMI@viriniaworks.gov](mailto:LMI@viriniaworks.gov)

Follow us on X (formerly Twitter): [@VirginiaLMI](https://twitter.com/VirginiaLMI).

## Virginia's Latest Unemployment Insurance Weekly Initial Claims Down at 2,473; Continued Claims at 18,179

**RICHMOND**— Virginia Works announced today that 2,473 unemployment insurance weekly **initial claims** were filed during the week ending February 22, 2025, which is 14.7 percent lower than last week's 2,899 claims and 23.9 percent higher than the comparable week of last year (1,996). Nearly 70 percent of claimants self-reported an associated industry; of those reported, the top five industries (61 percent) were Professional, Scientific, and Technical Services (362); Health Care and Social Assistance (183); Administrative and Support and Waste Management (179); Retail Trade (178); and Accommodation and Food Services (135).

**Continued weeks claims** (18,179) were 3.4 percent higher than last week (17,579) and were 15.5 percent higher than the comparable week of last year (15,736). Nearly 91 percent of claimants self-reported an associated industry; of those reported, the top five industries (58 percent) were Professional, Scientific, and Technical Services (2,725); Administrative and Support and Waste Management (2,196); Manufacturing (1,610); Construction (1,596); and Health Care and Social Assistance (1,536).

**Significant Layoffs and Announcements are available at the following websites:**

[WARN Notices | Virginia Works](#)

[Announcements | Virginia Economic Development Partnership](#)

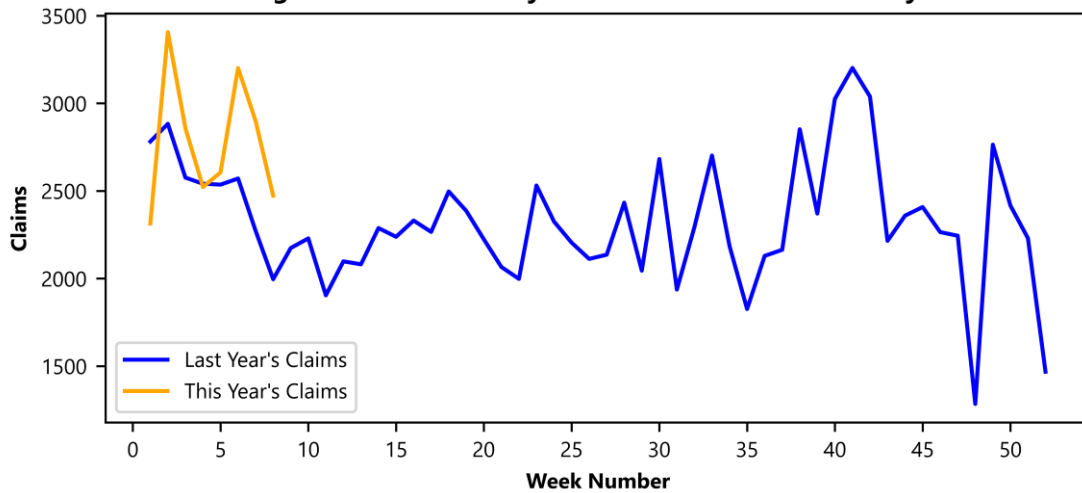
(more)

**Richmond, VA**

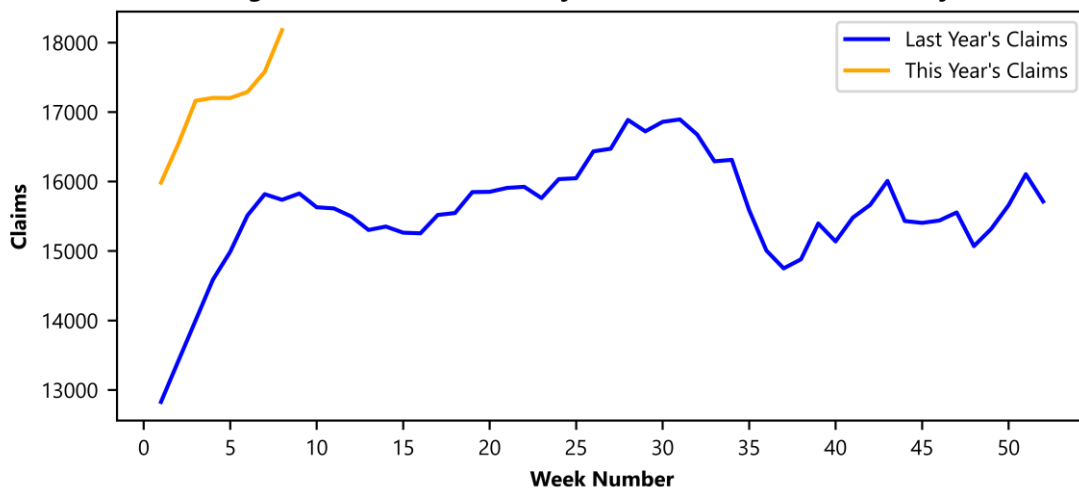
### Initial Claims – Comparison of Unemployment Insurance Activity

	Week Ending 02/22/2025	Week Ending 02/15/2025	Week Ending 02/08/2025	Last Year 02/24/2024
Initial Claims	2,473	2,899	3,202	1,996
Initial Change (%)	-426 (-14.7%)	-303 (-9.5%)	+596 (+22.9%)	+477 (+23.9%)
Continued Claims	18,179	17,579	17,288	15,736

**Virginia Initial Claims by Week: Previous and Current year**



**Virginia Continued Claims by Week: Previous and Current year**

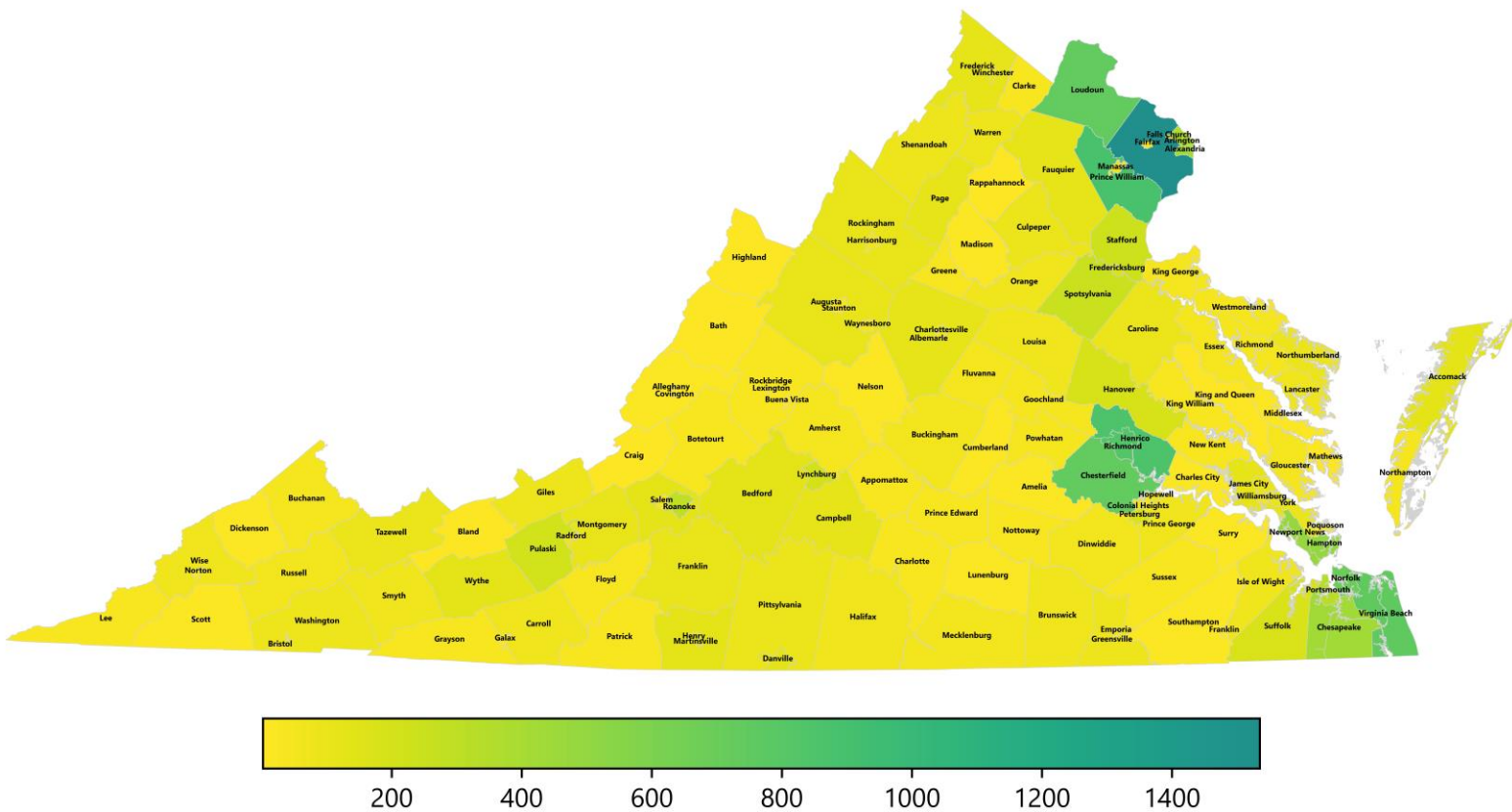


# Virginia Continued Weeks Claimed

A person who has already filed an initial claim and who has experienced a week of unemployment files a continued claim to claim benefits for that week of unemployment. On a weekly basis, continued claims reflect a good approximation of the current number of insured unemployed workers filing for UI benefits, and are a good indicator of labor market conditions. While continued claims are not a leading indicator, they provide confirming evidence of the direction of the economy.

The color-coded map below shows the distribution of this week's continued claims for Virginia's counties and cities.

Yellow represents low numbers, while progressively darker shades transitioning from yellow to green and dark green signify increasing numbers of continued claims. The legend located at the bottom provides the color spectrum and its corresponding count of continued claims.



### Initial Claims for All States

In the week ending February 22, the advance figure for seasonally adjusted initial claims was 242,000, an increase of 22,000 from the previous week's revised level. The previous week's level was revised up by 1,000 from 219,000 to 220,000. The advance number of actual initial claims under state programs, unadjusted, totaled 220,541 in the week ending February 22, a decrease of 2,997 (or 1.3 percent) from the previous week. The seasonal factors had expected a decrease of 22,464 (or 10.0 percent) from the previous week. There were 195,774 initial claims in the comparable week in 2024.

<b>Initial State Claims (5 largest decreases)</b> (Not Seasonally Adjusted)			
State	Initial Claims (this week)	Initial Claims (prior week)	Change
Kentucky	2,119	5,097	-2,978
Tennessee	3,092	5,658	-2,566
California	42,849	45,015	-2,166
Washington	5,930	7,849	-1,919
Texas	14,407	15,718	-1,311

<b>Initial State Claims (5 largest increases)</b> (Not Seasonally Adjusted)			
State	Initial Claims (this week)	Initial Claims (prior week)	Change
Massachusetts	9,179	5,448	3,731
Rhode Island	2,964	909	2,055
Illinois	11,028	9,527	1,501
Wisconsin	5,763	4,671	1,092
Iowa	3,073	2,213	860

## All States Initial Weeks Claimed

An initial claim is a claim filed by an unemployed individual after a separation from an employer. The count of U.S. initial claims for unemployment insurance is a leading economic indicator because it is an indication of emerging labor market conditions in the country.

Below is a color-coded map illustrating the percentage change in initial claims from last week to this week across all states nationwide, derived from the latest U.S. Department of Labor Weekly Claims News Release (<https://www.dol.gov/ui/data.pdf>). Green denotes a reduction in continued claims from last week, thus showing improvement, with progressively darker shades of green signifying greater improvement. Purple denotes an increase in continued claims from last week, thus showing deterioration, with progressively darker shades of purple signifying greater deterioration. Very light green, purple or white indicates minimal change from last week. The legend at the bottom provides the color spectrum along with its corresponding percentage value.

