

For Release: Thursday, September 12, 2024

Contact: Virginia Works
Economic Information & Analytics Division
(804)786-7496
LMI@viriniaworks.gov

Follow us on Twitter X: [@VirginiaLMI](https://twitter.com/VirginiaLMI).

Virginia's Latest Unemployment Insurance Weekly Initial Claims at 2,129; Continued Claims at 15,006

RICHMOND— Virginia Works announced today that 2,129 unemployment insurance weekly **initial claims** were filed during the week ending September 07, 2024, which is 16.6 percent higher than last week's 1,826 claims and 0.5 percent higher than the comparable week of last year (2,118). Nearly 77 percent of claimants self-reported an associated industry; of those reported, the top five industries (58 percent) were Professional, Scientific, and Technical Services (235); Administrative and Support and Waste Management (191); Health Care and Social Assistance (186); Manufacturing (160); and Retail Trade (152).

Continued weeks claims (15,006) were 3.7 percent lower than last week (15,589) and were 15.2 percent higher than the comparable week of last year (13,027). Nearly 93 percent of claimants self-reported an associated industry; of those reported, the top five industries (59 percent) were Professional, Scientific, and Technical Services (2,367); Administrative and Support and Waste Management (2,101); Health Care and Social Assistance (1,430); Retail Trade (1,245); and Manufacturing (1,131).

Significant Layoffs and Announcements are available at the following websites:

[WARN Notices | Virginia Employment Commission](#)

[Announcements | Virginia Economic Development Partnership](#)

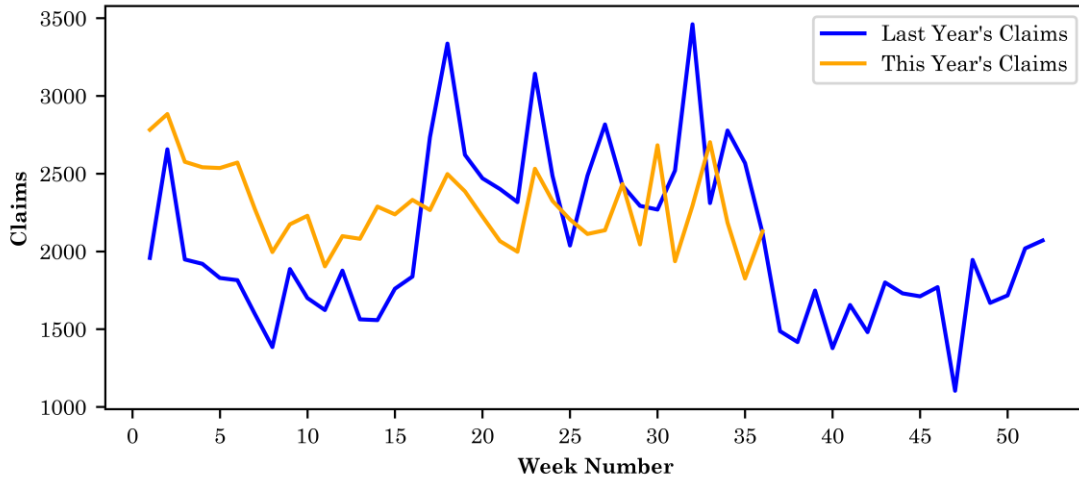
(more)

Richmond, VA

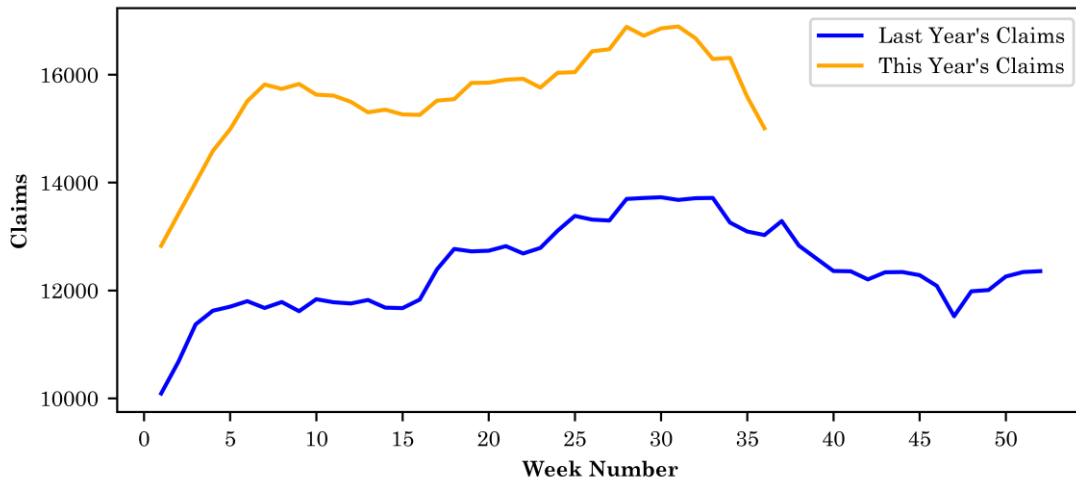
Initial Claims – Comparison of Unemployment Insurance Activity

	Week Ending 09/07/2024	Week Ending 08/31/2024	Week Ending 08/24/2024	Last Year 09/09/2023
Initial Claims	2,129	1,826	2,185	2,118
Initial Change (%)	+303 (+16.6%)	-359 (-16.4%)	-517 (-19.1%)	+11 (+0.5%)
Continued Claims	15,006	15,589	16,311	13,027

Virginia Initial Claims by Week: Previous and Current year



Virginia Continued Claims by Week: Previous and Current year

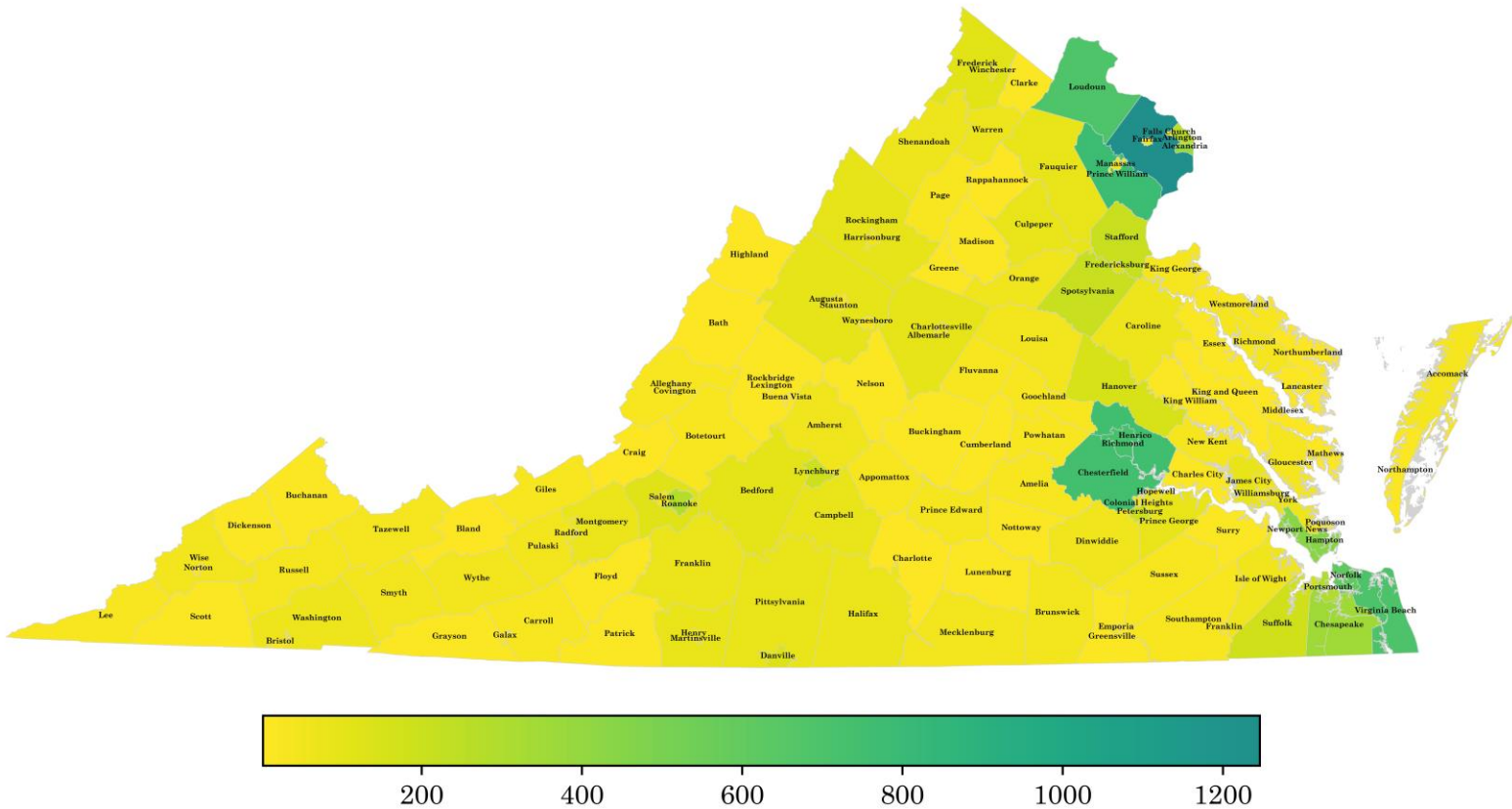


Virginia Continued Weeks Claimed

A person who has already filed an initial claim and who has experienced a week of unemployment files a continued claim to claim benefits for that week of unemployment. On a weekly basis, continued claims reflect a good approximation of the current number of insured unemployed workers filing for UI benefits, and are a good indicator of labor market conditions. While continued claims are not a leading indicator, they provide confirming evidence of the direction of the economy.

The color-coded map below shows the distribution of this week's continued claims for Virginia's counties and cities.

Yellow represents low numbers, while progressively darker shades transitioning from yellow to green and dark green signify increasing numbers of continued claims. The legend located at the bottom provides the color spectrum and its corresponding count of continued claims.



Initial Claims for All States

In the week ending September 7, the advance figure for seasonally adjusted initial claims was 230,000, an increase of 2,000 from the previous week's revised level. The previous week's level was revised up by 1,000 from 227,000 to 228,000. The advance number of actual initial claims under state programs, unadjusted, totaled 177,663 in the week ending September 7, a decrease of 12,968 (or 6.8 percent) from the previous week. The seasonal factors had expected a decrease of 14,366 (or 7.5 percent) from the previous week. There were 175,594 initial claims in the comparable week in 2023.

Initial State Claims (5 largest decreases) (Not Seasonally Adjusted)			
State	Initial Claims (this week)	Initial Claims (prior week)	Change
New York	12,333	15,111	-2,778
Ohio	4,466	5,614	-1,148
Georgia	4,119	5,184	-1,065
California	37,017	38,077	-1,060
Michigan	4,726	5,771	-1,045

Initial State Claims (5 largest increases) (Not Seasonally Adjusted)			
State	Initial Claims (this week)	Initial Claims (prior week)	Change
Nebraska	1,167	572	595
Wisconsin	4,487	3,972	515
Iowa	2,182	1,684	498
Minnesota	3,592	3,307	285
Oregon	3,503	3,249	254

All States Initial Weeks Claimed

An initial claim is a claim filed by an unemployed individual after a separation from an employer. The count of U.S. initial claims for unemployment insurance is a leading economic indicator because it is an indication of emerging labor market conditions in the country.

Below is a color-coded map illustrating the percentage change in initial claims from last week to this week across all states nationwide, derived from the latest U.S Department of Labor Weekly Claims News Release (<https://www.dol.gov/ui/data.pdf>). Green denotes a reduction in continued claims from last week, thus showing improvement, with progressively darker shades of green signifying greater improvement. Purple denotes an increase in continued claims from last week, thus showing deterioration, with progressively darker shades of purple signifying greater deterioration. Very light green, purple or white indicates minimal change from last week. The legend at the bottom provides the color spectrum along with its corresponding percentage value.

