



COMMONWEALTH of VIRGINIA

Department of Workforce Development and Advancement

Carrie Roth
Commissioner

Post Office Box 25519
Richmond, VA 23260-5519

For Release: Thursday, August 15, 2024

Contact: Virginia Works
Economic Information & Analytics Division
(804)786-7496
LMI@viriniaworks.gov

Follow us on Twitter X: [@VirginiaLMI](https://twitter.com/VirginiaLMI).

Virginia's Latest Unemployment Insurance Weekly Initial Claims at 2,294; Continued Claims at 16,675

RICHMOND— Virginia Works announced today that 2,294 unemployment insurance weekly **initial claims** were filed during the week ending August 10, 2024, which is 18.4 percent higher than last week's 1,937 claims and 33.7 percent lower than the comparable week of last year (3,460). Nearly 73 percent of claimants self-reported an associated industry; of those reported, the top five industries (56 percent) were Administrative and Support and Waste Management (256); Professional, Scientific, and Technical Services (212); Health Care and Social Assistance (185); Retail Trade (146); and Manufacturing (137).

Continued weeks claims (16,675) were 1.3 percent lower than last week (16,893) and were 21.6 percent higher than the comparable week of last year (13,710). Nearly 93 percent of claimants self-reported an associated industry; of those reported, the top five industries (58 percent) were Professional, Scientific, and Technical Services (2,498); Administrative and Support and Waste Management (2,225); Health Care and Social Assistance (1,629); Accommodation and Food Services (1,381); and Manufacturing (1,357).

Significant Layoffs and Announcements are available at the following websites:

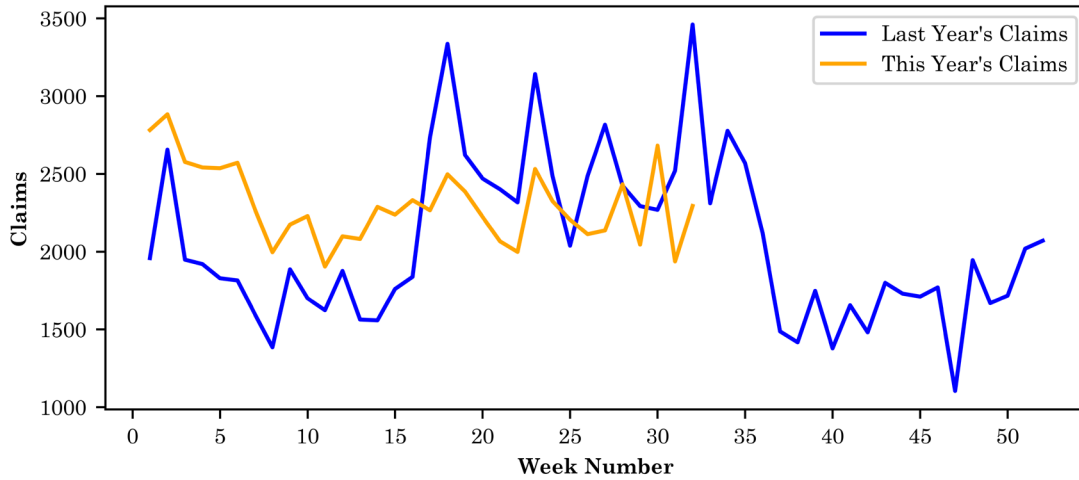
[WARN Notices | Virginia Employment Commission](#)

[Announcements | Virginia Economic Development Partnership](#)

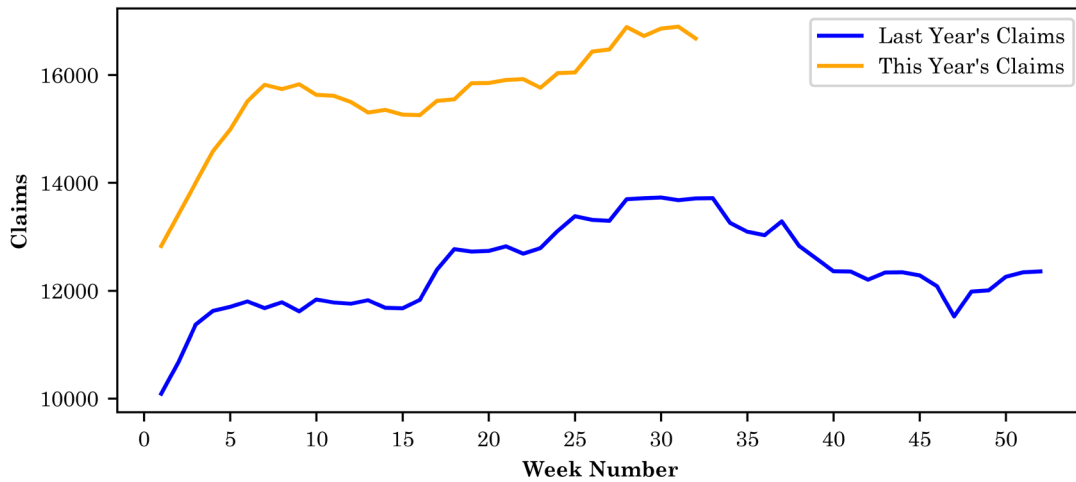
Initial Claims – Comparison of Unemployment Insurance Activity

	Week Ending 08/10/2024	Week Ending 08/03/2024	Week Ending 07/27/2024	Last Year 08/12/2023
Initial Claims	2,294	1,937	2,682	3,460
Initial Change (%)	+357 (+18.4%)	-745 (-27.8%)	+637 (+31.1%)	-1166 (-33.7%)
Continued Claims	16,675	16,893	16,858	13,710

Virginia Initial Claims by Week: Previous and Current year



Virginia Continued Claims by Week: Previous and Current year

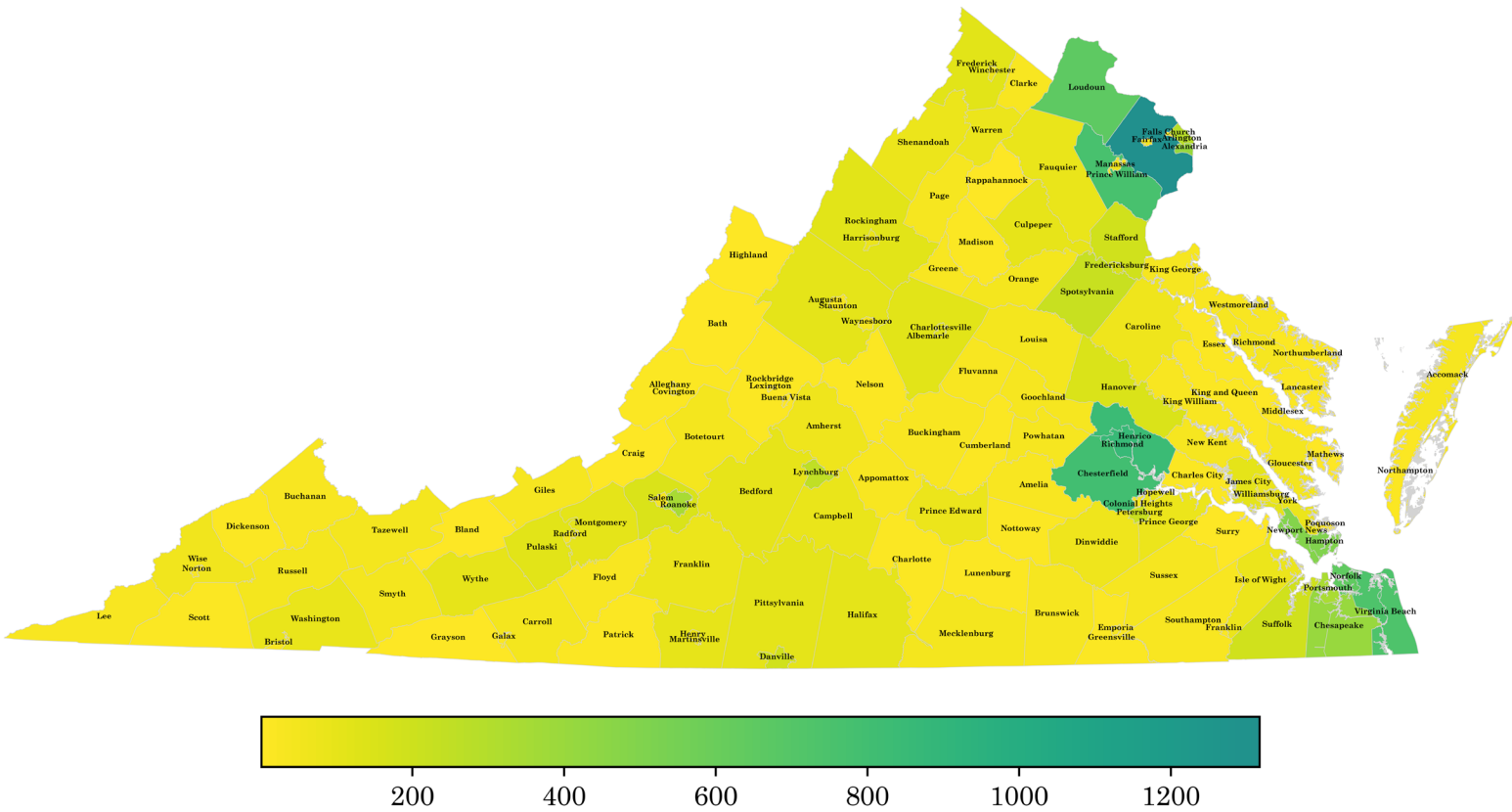


Virginia Continued Weeks Claimed

A person who has already filed an initial claim and who has experienced a week of unemployment files a continued claim to claim benefits for that week of unemployment. On a weekly basis, continued claims reflect a good approximation of the current number of insured unemployed workers filing for UI benefits, and are a good indicator of labor market conditions. While continued claims are not a leading indicator, they provide confirming evidence of the direction of the economy.

The color-coded map below shows the distribution of this week's continued claims for Virginia's counties and cities.

Yellow represents low numbers, while progressively darker shades transitioning from yellow to green and dark green signify increasing numbers of continued claims. The legend located at the bottom provides the color spectrum and its corresponding count of continued claims.



Initial Claims for All States

In the week ending August 10, the advance figure for seasonally adjusted initial claims was 227,000, a decrease of 7,000 from the previous week's revised level. The previous week's level was revised up by 1,000 from 233,000 to 234,000. The advance number of actual initial claims under state programs, unadjusted, totaled 199,530 in the week ending August 10, a decrease of 4,500 (or 2.2 percent) from the previous week. The seasonal factors had expected an increase of 1,874 (or 0.9 percent) from the previous week. There were 213,803 initial claims in the comparable week in 2023.

Initial State Claims (5 largest decreases) (Not Seasonally Adjusted)			
State	Initial Claims (this week)	Initial Claims (prior week)	Change
California	39,252	41,481	-2,229
Texas	18,523	19,898	-1,375
Massachusetts	5,323	6,347	-1,024
Pennsylvania	9,977	10,592	-615
Iowa	1,953	2,338	-385

Initial State Claims (5 largest increases) (Not Seasonally Adjusted)			
State	Initial Claims (this week)	Initial Claims (prior week)	Change
Michigan	7,880	7,219	661
Georgia	5,398	4,926	472
Oregon	3,807	3,394	413
Kansas	1,277	1,018	259
New Jersey	9,738	9,533	205

All States Initial Weeks Claimed

An initial claim is a claim filed by an unemployed individual after a separation from an employer. The count of U.S. initial claims for unemployment insurance is a leading economic indicator because it is an indication of emerging labor market conditions in the country.

Below is a color-coded map illustrating the percentage change in initial claims from last week to this week across all states nationwide, derived from the latest U.S Department of Labor Weekly Claims News Release (<https://www.dol.gov/ui/data.pdf>). Green denotes a reduction in continued claims from last week, thus showing improvement, with progressively darker shades of green signifying greater improvement. Purple denotes an increase in continued claims from last week, thus showing deterioration, with progressively darker shades of purple signifying greater deterioration. Very light green, purple or white indicates minimal change from last week. The legend at the bottom provides the color spectrum along with its corresponding percentage value.

