



## COMMONWEALTH of VIRGINIA

### Department of Workforce Development and Advancement

**Carrie Roth**  
Commissioner

Post Office Box 25519  
Richmond, VA 23260-5519

**For Release:** Thursday, August 01, 2024

**Contact:** Virginia Works  
Economic Information & Analytics Division  
(804)786-7496  
[LMI@viriniaworks.gov](mailto:LMI@viriniaworks.gov)

Follow us on Twitter X: [@VirginiaLMI](https://twitter.com/VirginiaLMI).

### **Virginia's Latest Unemployment Insurance Weekly Initial Claims at 2,682; Continued Claims at 16,858**

**RICHMOND**— Virginia Works announced today that 2,682 unemployment insurance weekly **initial claims** were filed during the week ending July 27, 2024, which is 31.1 percent higher than last week's 2,045 claims and 18.2 percent higher than the comparable week of last year (2,269). Nearly 82 percent of claimants self-reported an associated industry; of those reported, the top five industries (64 percent) were Manufacturing (426); Professional, Scientific, and Technical Services (253); Administrative and Support and Waste Management (240); Health Care and Social Assistance (212); and Retail Trade (203).

**Continued weeks claims** (16,858) were 0.8 percent higher than last week (16,721) and were 22.8 percent higher than the comparable week of last year (13,727). Nearly 94 percent of claimants self-reported an associated industry; of those reported, the top five industries (60 percent) were Professional, Scientific, and Technical Services (2,495); Administrative and Support and Waste Management (2,236); Health Care and Social Assistance (1,713); Retail Trade (1,541); and Accommodation and Food Services (1,415).

**Significant Layoffs and Announcements are available at the following websites:**

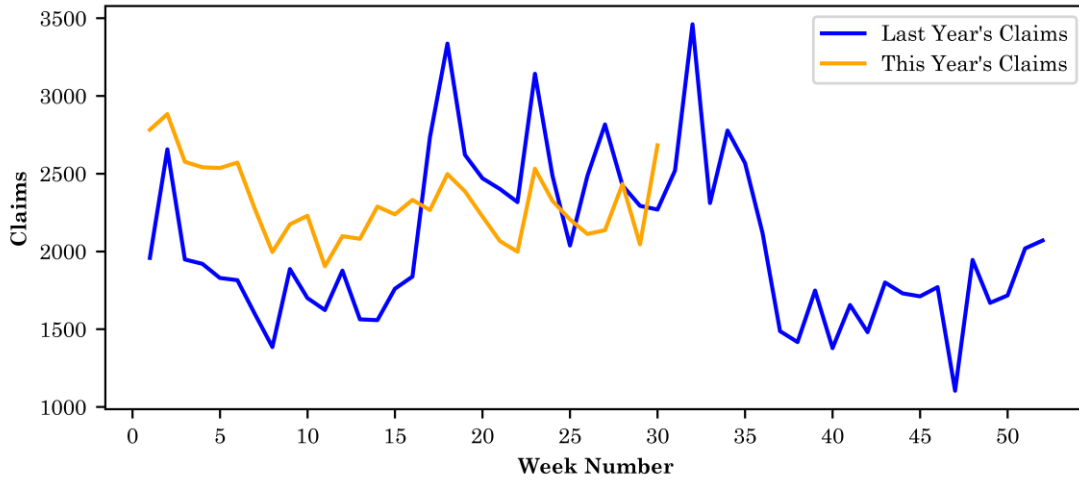
[WARN Notices | Virginia Employment Commission](#)

[Announcements | Virginia Economic Development Partnership](#)

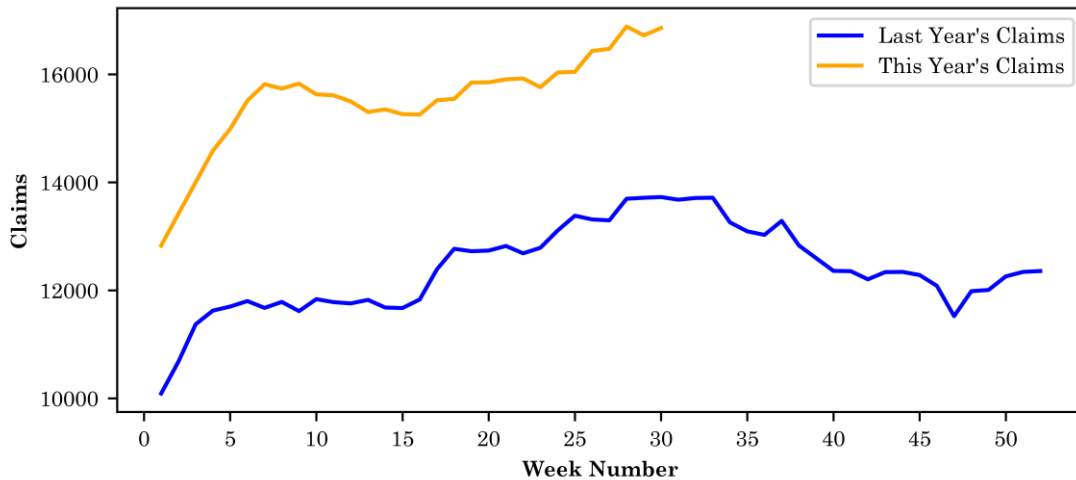
### Initial Claims – Comparison of Unemployment Insurance Activity

	Week Ending 07/27/2024	Week Ending 07/20/2024	Week Ending 07/13/2024	Last Year 07/29/2023
Initial Claims	2,682	2,045	2,433	2,269
Initial Change (%)	+637 (+31.1%)	-388 (-15.9%)	+297 (+13.9%)	+413 (+18.2%)
Continued Claims	16,858	16,721	16,886	13,727

**Virginia Initial Claims by Week: Previous and Current year**



**Virginia Continued Claims by Week: Previous and Current year**





### Initial Claims for All States

In the week ending July 27, the advance figure for seasonally adjusted initial claims was 249,000, an increase of 14,000 from the previous week's unrevised level of 235,000. The advance number of actual initial claims under state programs, unadjusted, totaled 215,827 in the week ending July 27, a decrease of 10,012 (or 4.4 percent) from the previous week. The seasonal factors had expected a decrease of 21,901 (or 9.7 percent) from the previous week. There were 205,550 initial claims in the comparable week in 2023.

<b>Initial State Claims (5 largest decreases)</b> (Not Seasonally Adjusted)			
State	Initial Claims (this week)	Initial Claims (prior week)	Change
Texas	25,453	31,685	-6,232
Ohio	5,340	7,769	-2,429
New York	13,255	15,545	-2,290
Florida	5,258	7,059	-1,801
Tennessee	2,736	4,252	-1,516

<b>Initial State Claims (5 largest increases)</b> (Not Seasonally Adjusted)			
State	Initial Claims (this week)	Initial Claims (prior week)	Change
Michigan	14,655	10,622	4,033
Missouri	6,230	2,878	3,352
Massachusetts	6,672	4,602	2,070
Virginia	2,708	2,045	663
Minnesota	3,705	3,194	511

## All States Initial Weeks Claimed

An initial claim is a claim filed by an unemployed individual after a separation from an employer. The count of U.S. initial claims for unemployment insurance is a leading economic indicator because it is an indication of emerging labor market conditions in the country.

Below is a color-coded map illustrating the percentage change in initial claims from last week to this week across all states nationwide, derived from the latest U.S Department of Labor Weekly Claims News Release (<https://www.dol.gov/ui/data.pdf>). Green denotes a reduction in continued claims from last week, thus showing improvement, with progressively darker shades of green signifying greater improvement. Purple denotes an increase in continued claims from last week, thus showing deterioration, with progressively darker shades of purple signifying greater deterioration. Very light green, purple or white indicates minimal change from last week. The legend at the bottom provides the color spectrum along with its corresponding percentage value.

