



## COMMONWEALTH of VIRGINIA

### Department of Workforce Development and Advancement

**Carrie Roth**  
Commissioner

Post Office Box 25519  
Richmond, VA 23260-5519

**For Release:** Thursday, July 18, 2024

**Contact:** Virginia Works  
Economic Information & Analytics Division  
(804)786-7496  
[LMI@viriniaworks.gov](mailto:LMI@viriniaworks.gov)

Follow us on Twitter X: [@VirginiaLMI](https://twitter.com/VirginiaLMI).

### **Virginia's Latest Unemployment Insurance Weekly Initial Claims at 2,433; Continued Claims at 16,886**

**RICHMOND**— Virginia Works announced today that 2,433 unemployment insurance weekly **initial claims** were filed during the week ending July 13, 2024, which is 13.9 percent higher than last week's 2,136 claims and 0.4 percent higher than the comparable week of last year (2,424). Nearly 83 percent of claimants self-reported an associated industry; of those reported, the top five industries (61 percent) were Retail Trade (351); Professional, Scientific, and Technical Services (270); Administrative and Support and Waste Management (247); Health Care and Social Assistance (217); and Manufacturing (125).

**Continued weeks claims** (16,886) were 2.5 percent higher than last week (16,471) and were 23.3 percent higher than the comparable week of last year (13,696). Nearly 93 percent of claimants self-reported an associated industry; of those reported, the top five industries (59 percent) were Professional, Scientific, and Technical Services (2,521); Administrative and Support and Waste Management (2,260); Health Care and Social Assistance (1,695); Accommodation and Food Services (1,445); and Retail Trade (1,388).

**Significant Layoffs and Announcements are available at the following websites:**

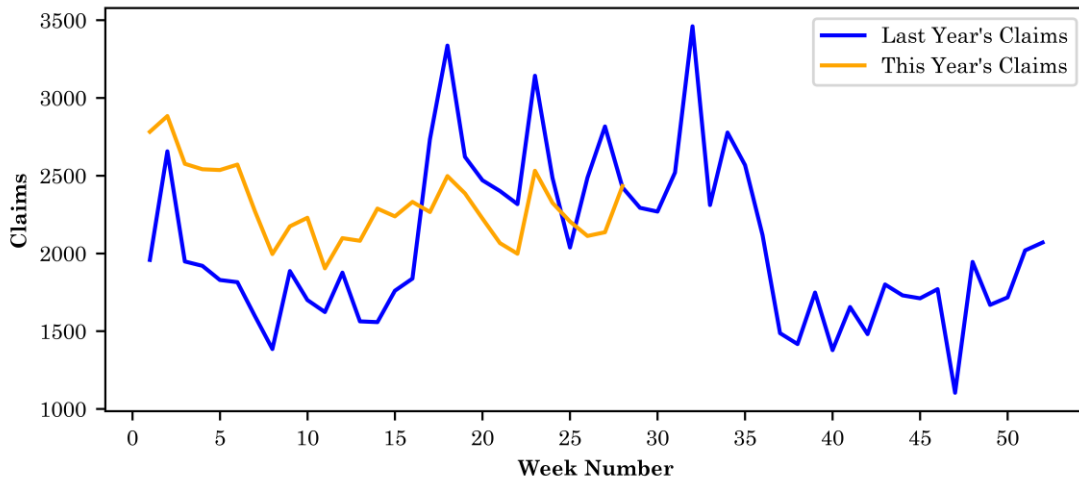
[WARN Notices | Virginia Employment Commission](#)

[Announcements | Virginia Economic Development Partnership](#)

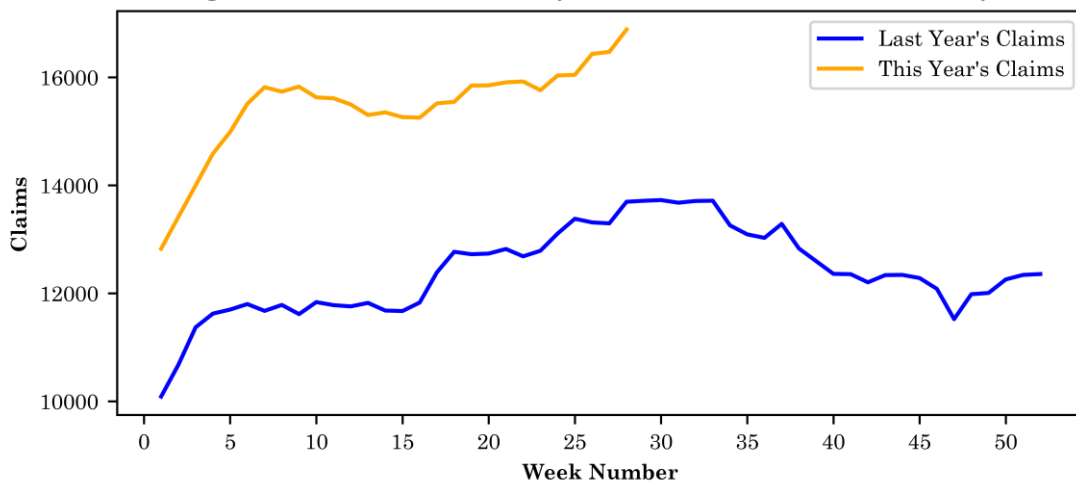
**Initial Claims – Comparison of Unemployment Insurance Activity**

	Week Ending 07/13/2024	Week Ending 07/06/2024	Week Ending 06/29/2024	Last Year 07/15/2023
Initial Claims	2,433	2,136	2,112	2,424
Initial Change (%)	+297 (+13.9%)	+24 (+1.1%)	-93 (-4.2%)	+9 (+0.4%)
Continued Claims	16,886	16,471	16,433	13,696

**Virginia Initial Claims by Week: Previous and Current year**



**Virginia Continued Claims by Week: Previous and Current year**

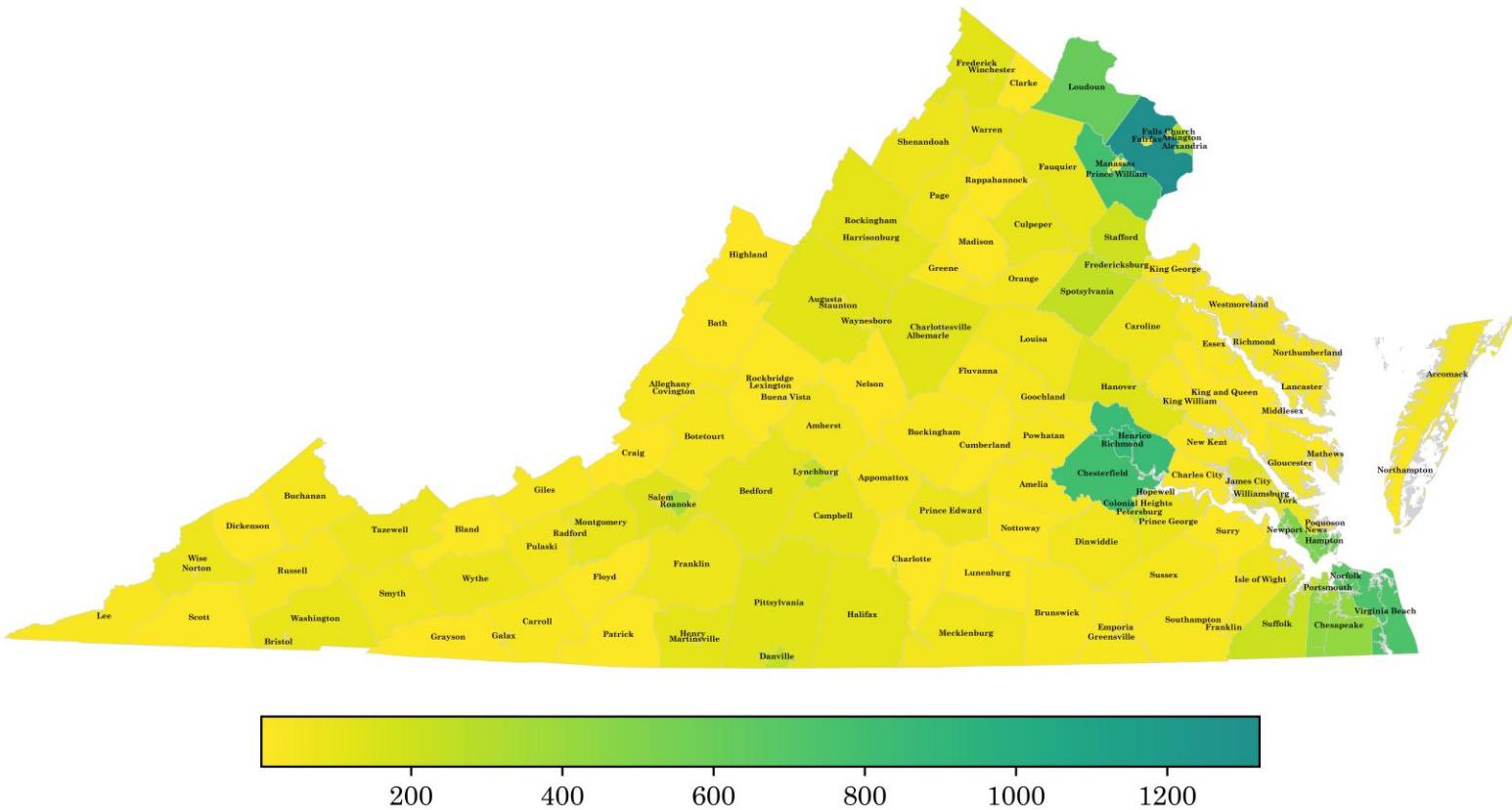


# Virginia Continued Weeks Claimed

A person who has already filed an initial claim and who has experienced a week of unemployment files a continued claim to claim benefits for that week of unemployment. On a weekly basis, continued claims reflect a good approximation of the current number of insured unemployed workers filing for UI benefits, and are a good indicator of labor market conditions. While continued claims are not a leading indicator, they provide confirming evidence of the direction of the economy.

The color-coded map below shows the distribution of this week's continued claims for Virginia's counties and cities.

Yellow represents low numbers, while progressively darker shades transitioning from yellow to green and dark green signify increasing numbers of continued claims. The legend located at the bottom provides the color spectrum and its corresponding count of continued claims.



### Initial Claims for All States

In the week ending July 13, the advance figure for seasonally adjusted initial claims was 243,000, an increase of 20,000 from the previous week's revised level. The previous week's level was revised up by 1,000 from 222,000 to 223,000. The advance number of actual initial claims under state programs, unadjusted, totaled 279,032 in the week ending July 13, an increase of 36,824 (or 15.2 percent) from the previous week. The seasonal factors had expected an increase of 13,840 (or 5.7 percent) from the previous week. There were 258,328 initial claims in the comparable week in 2023.

<b>Initial State Claims (5 largest decreases)</b> (Not Seasonally Adjusted)			
State	Initial Claims (this week)	Initial Claims (prior week)	Change
New Jersey	10,546	12,206	-1,660
Massachusetts	6,455	8,033	-1,578
Indiana	4,344	5,729	-1,385
Tennessee	3,484	4,420	-936
Iowa	2,511	3,219	-708

<b>Initial State Claims (5 largest increases)</b> (Not Seasonally Adjusted)			
State	Initial Claims (this week)	Initial Claims (prior week)	Change
Texas	25,333	13,796	11,537
California	47,791	40,874	6,917
Georgia	7,805	4,953	2,852
Missouri	6,333	3,489	2,844
New York	23,855	21,231	2,624

## All States Initial Weeks Claimed

An initial claim is a claim filed by an unemployed individual after a separation from an employer. The count of U.S. initial claims for unemployment insurance is a leading economic indicator because it is an indication of emerging labor market conditions in the country.

Below is a color-coded map illustrating the percentage change in initial claims from last week to this week across all states nationwide, derived from the latest U.S Department of Labor Weekly Claims News Release (<https://www.dol.gov/ui/data.pdf>). Green denotes a reduction in continued claims from last week, thus showing improvement, with progressively darker shades of green signifying greater improvement. Purple denotes an increase in continued claims from last week, thus showing deterioration, with progressively darker shades of purple signifying greater deterioration. Very light green, purple or white indicates minimal change from last week. The legend at the bottom provides the color spectrum along with its corresponding percentage value.

