



## COMMONWEALTH of VIRGINIA

### Department of Workforce Development and Advancement

**Carrie Roth**  
Commissioner

Post Office Box 25519  
Richmond, VA 23260-5519

**For Release:** Thursday, July 11, 2024

**Contact:** Virginia Works  
Economic Information & Analytics Division  
(804)786-7496  
[LMI@viriniaworks.gov](mailto:LMI@viriniaworks.gov)

Follow us on Twitter X: [@VirginiaLMI](https://twitter.com/VirginiaLMI).

### **Virginia's Latest Unemployment Insurance Weekly Initial Claims at 2,136; Continued Claims at 16,471**

**RICHMOND**— Virginia Works announced today that 2,136 unemployment insurance weekly **initial claims** were filed during the week ending July 06, 2024, which is 1.1 percent higher than last week's 2,112 claims and 24.1 percent lower than the comparable week of last year (2,816). Nearly 78 percent of claimants self-reported an associated industry; of those reported, the top five industries (57 percent) were Professional, Scientific, and Technical Services (233); Administrative and Support and Waste Management (200); Health Care and Social Assistance (197); Retail Trade (161); and Manufacturing (158).

**Continued weeks claims** (16,471) were 0.2 percent higher than last week (16,433) and were 23.9 percent higher than the comparable week of last year (13,296). Nearly 93 percent of claimants self-reported an associated industry; of those reported, the top five industries (59 percent) were Professional, Scientific, and Technical Services (2,429); Administrative and Support and Waste Management (2,224); Health Care and Social Assistance (1,663); Accommodation and Food Services (1,404); and Retail Trade (1,353).

**Significant Layoffs and Announcements are available at the following websites:**

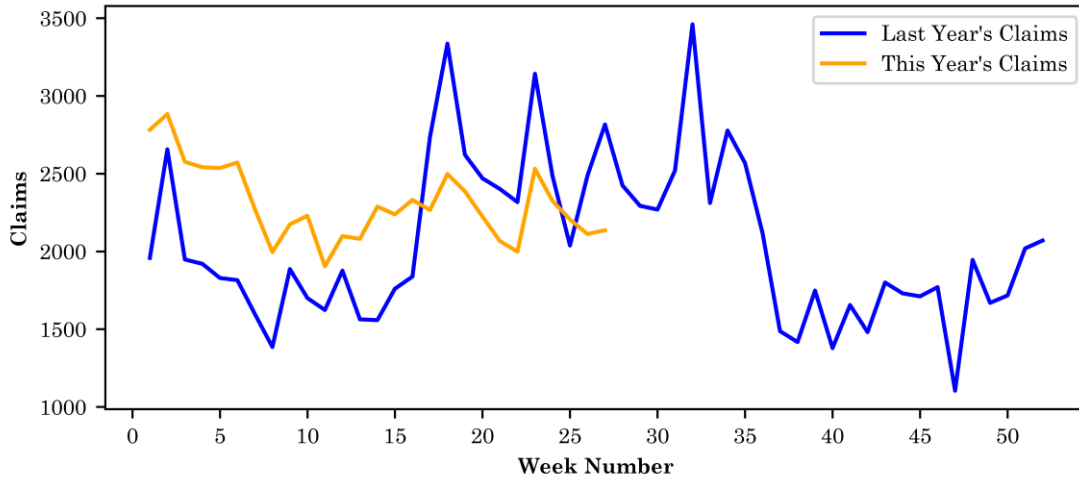
[WARN Notices | Virginia Employment Commission](#)

[Announcements | Virginia Economic Development Partnership](#)

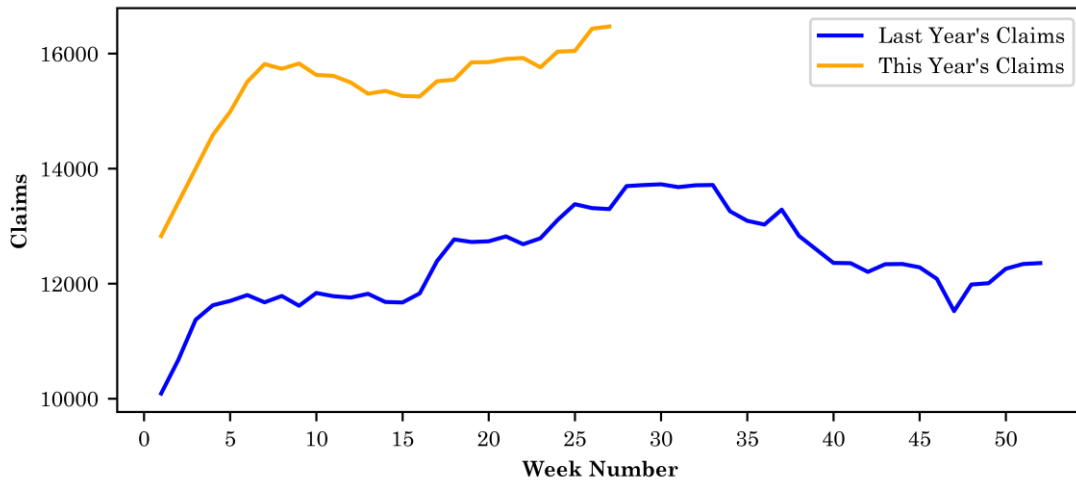
**Initial Claims – Comparison of Unemployment Insurance Activity**

	Week Ending <b>07/06/2024</b>	Week Ending <b>06/29/2024</b>	Week Ending <b>06/22/2024</b>	Last Year <b>07/08/2023</b>
Initial Claims	2,136	2,112	2,205	2,816
Initial Change (%)	+24 (+1.1%)	-93 (-4.2%)	-120 (-5.2%)	-680 (-24.1%)
Continued Claims	16,471	16,433	16,046	13,296

**Virginia Initial Claims by Week: Previous and Current year**



**Virginia Continued Claims by Week: Previous and Current year**





### Initial Claims for All States

In the week ending July 6, the advance figure for seasonally adjusted initial claims was 222,000, a decrease of 17,000 from the previous week's revised level. The previous week's level was revised up by 1,000 from 238,000 to 239,000. The advance number of actual initial claims under state programs, unadjusted, totaled 241,045 in the week ending July 6, an increase of 1,666 (or 0.7 percent) from the previous week. The seasonal factors had expected an increase of 20,347 (or 8.5 percent) from the previous week. There were 258,065 initial claims in the comparable week in 2023.

<b>Initial State Claims (5 largest decreases)</b> (Not Seasonally Adjusted)			
State	Initial Claims (this week)	Initial Claims (prior week)	Change
New Jersey	12,108	17,723	-5,615
California	41,382	46,546	-5,164
Georgia	4,779	6,853	-2,074
Texas	13,626	15,605	-1,979
Massachusetts	8,004	9,039	-1,035

<b>Initial State Claims (5 largest increases)</b> (Not Seasonally Adjusted)			
State	Initial Claims (this week)	Initial Claims (prior week)	Change
Michigan	17,637	7,097	10,540
New York	21,333	15,984	5,349
Indiana	5,772	2,894	2,878
Tennessee	4,500	3,254	1,246
Ohio	7,121	5,891	1,230

## All States Initial Weeks Claimed

An initial claim is a claim filed by an unemployed individual after a separation from an employer. The count of U.S. initial claims for unemployment insurance is a leading economic indicator because it is an indication of emerging labor market conditions in the country.

Below is a color-coded map illustrating the percentage change in initial claims from last week to this week across all states nationwide, derived from the latest U.S Department of Labor Weekly Claims News Release (<https://www.dol.gov/ui/data.pdf>). Green denotes a reduction in continued claims from last week, thus showing improvement, with progressively darker shades of green signifying greater improvement. Purple denotes an increase in continued claims from last week, thus showing deterioration, with progressively darker shades of purple signifying greater deterioration. Very light green, purple or white indicates minimal change from last week. The legend at the bottom provides the color spectrum along with its corresponding percentage value.

