



## COMMONWEALTH of VIRGINIA

### Department of Workforce Development and Advancement

**Carrie Roth**  
Director

6606 W. Broad Street  
Richmond, VA 23230

**For Release:** Thursday, May 30, 2024

**Contact:** Virginia Works  
Economic Information & Analytics Division  
(804)786-7496  
[LMI@viriniaworks.gov](mailto:LMI@viriniaworks.gov)

Follow us on Twitter X: [@VirginiaLMI](https://twitter.com/VirginiaLMI).

### **Virginia's Latest Unemployment Insurance Weekly Initial Claims at 2,066; Continued Claims at 15,907**

**RICHMOND**— Virginia Works announced today that 2,066 unemployment insurance weekly **initial claims** were filed during the week ending May 25, 2024, which is 7.1 percent lower than last week's 2,224 claims and 14.0 percent lower than the comparable week of last year (2,401). Nearly 84 percent of claimants self-reported an associated industry; of those reported, the top five industries (62 percent) were Accommodation and Food Services (287); Administrative and Support and Waste Management (244); Professional, Scientific, and Technical Services (208); Health Care and Social Assistance (187); and Retail Trade (153).

**Continued weeks claims** (15,907) were 0.4 percent higher than last week (15,851) and were 24.1 percent higher than the comparable week of last year (12,821). Nearly 93 percent of claimants self-reported an associated industry; of those reported, the top five industries (59 percent) were Professional, Scientific, and Technical Services (2,440); Administrative and Support and Waste Management (2,175); Health Care and Social Assistance (1,483); Retail Trade (1,321); and Manufacturing (1,313).

**Significant Layoffs and Announcements are available at the following websites:**

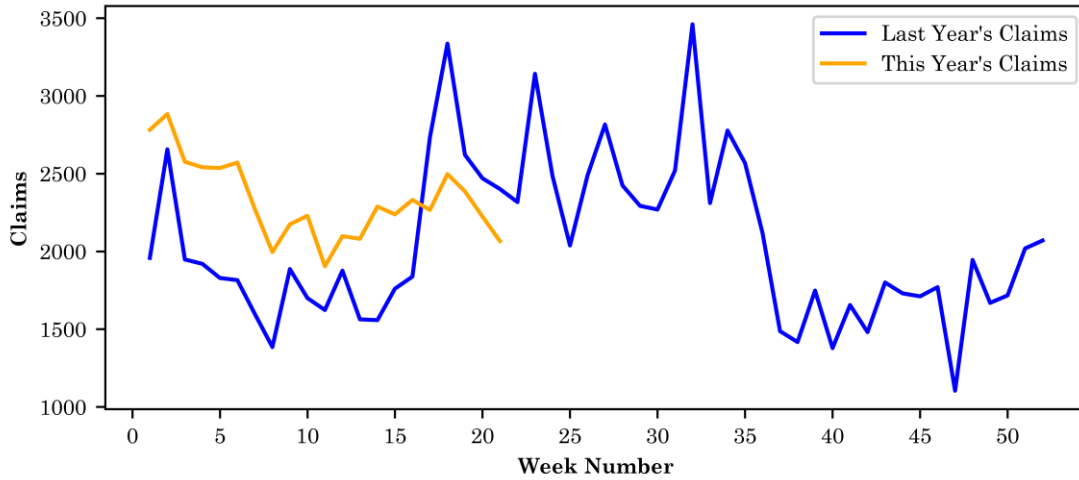
[WARN Notices | Virginia Employment Commission](#)

[Announcements | Virginia Economic Development Partnership](#)

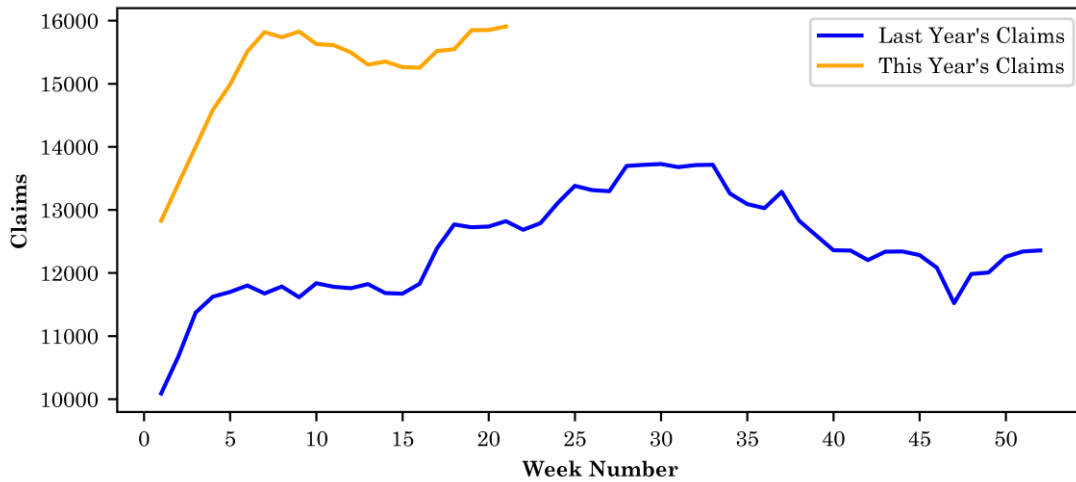
### Initial Claims – Comparison of Unemployment Insurance Activity

	Week Ending 05/25/2024	Week Ending 05/18/2024	Week Ending 05/11/2024	Last Year 05/27/2023
Initial Claims	2,066	2,224	2,386	2,401
Initial Change (%)	-158 (-7.1%)	-162 (-6.8%)	-111 (-4.4%)	-335 (-14.0%)
Continued Claims	15,907	15,851	15,847	12,821

**Virginia Initial Claims by Week: Previous and Current year**



**Virginia Continued Claims by Week: Previous and Current year**





### Initial Claims for All States

In the week ending May 25, the advance figure for seasonally adjusted initial claims was 219,000, an increase of 3,000 from the previous week's revised level. The previous week's level was revised up by 1,000 from 215,000 to 216,000. The advance number of actual initial claims under state programs, unadjusted, totaled 195,615 in the week ending May 25, an increase of 2,898 (or 1.5 percent) from the previous week. The seasonal factors had expected no change in the unadjusted data from the previous week. There were 208,053 initial claims in the comparable week in 2023.

<b>Initial State Claims (5 largest decreases)</b> (Not Seasonally Adjusted)			
State	Initial Claims (this week)	Initial Claims (prior week)	Change
Pennsylvania	9,487	10,332	-845
California	39,130	39,890	-760
Ohio	4,505	5,194	-689
Florida	6,113	6,612	-499
North Carolina	2,932	3,415	-483

<b>Initial State Claims (5 largest increases)</b> (Not Seasonally Adjusted)			
State	Initial Claims (this week)	Initial Claims (prior week)	Change
Tennessee	5,008	3,118	1,890
Michigan	7,394	5,791	1,603
Minnesota	4,029	3,201	828
Illinois	8,983	8,173	810
Missouri	3,797	3,080	717

