

For Release: Thursday, February 06, 2025

Contact: Virginia Works
Economic Information & Analytics Division
(804) 786-7496
LMI@viriniaworks.gov

Follow us on X (formerly Twitter): [@VirginiaLMI](https://twitter.com/VirginiaLMI).

Virginia's Latest Unemployment Insurance Weekly Initial Claims Up at 2,606; Continued Claims at 17,201

RICHMOND— Virginia Works announced today that 2,606 unemployment insurance weekly **initial claims** were filed during the week ending February 01, 2025, which is 3.3 percent higher than last week's 2,522 claims and 2.8 percent higher than the comparable week of last year (2,536). Nearly 80 percent of claimants self-reported an associated industry; of those reported, the top five industries (60 percent) were Professional, Scientific, and Technical Services (324); Administrative and Support and Waste Management (252); Health Care and Social Assistance (244); Retail Trade (189); and Construction (169).

Continued weeks claims (17,201) were virtually unchanged since last week (17,203) and were 14.8 percent higher than the comparable week of last year (14,987). Nearly 92 percent of claimants self-reported an associated industry; of those reported, the top five industries (57 percent) were Professional, Scientific, and Technical Services (2,418); Administrative and Support and Waste Management (2,124); Construction (1,625); Health Care and Social Assistance (1,433); and Manufacturing (1,389).

Significant Layoffs and Announcements are available at the following websites:

[WARN Notices | Virginia Works](#)

[Announcements | Virginia Economic Development Partnership](#)

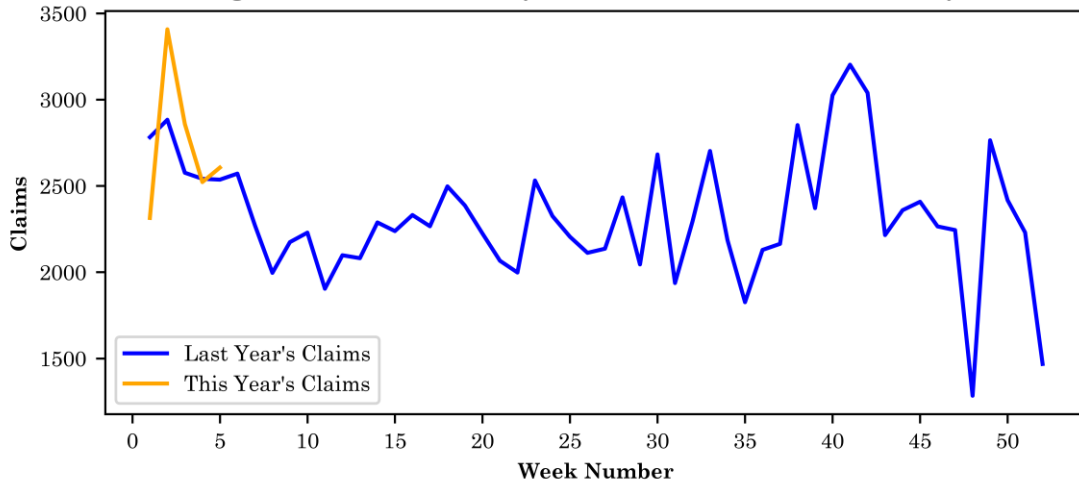
(more)

Richmond, VA

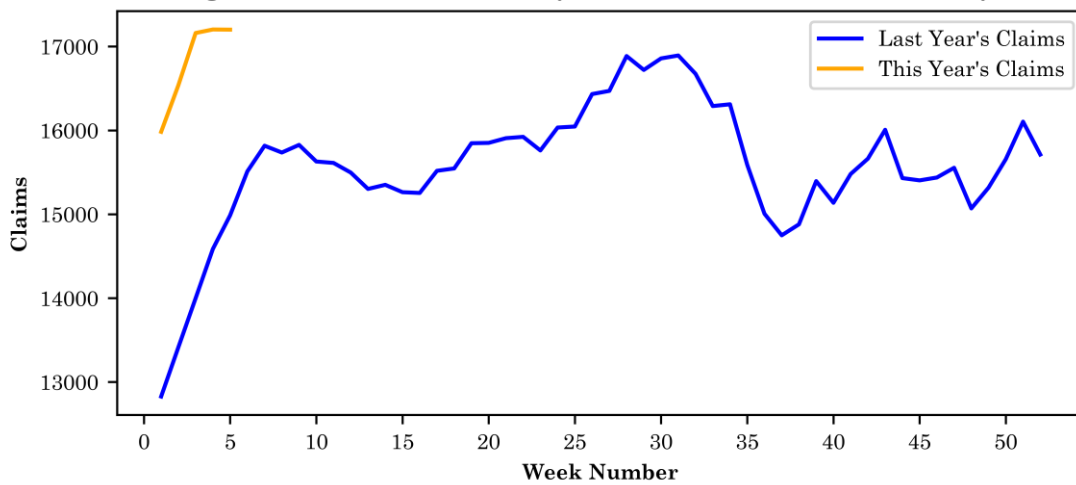
Initial Claims – Comparison of Unemployment Insurance Activity

	Week Ending 02/01/2025	Week Ending 01/25/2025	Week Ending 01/18/2025	Last Year 02/03/2024
Initial Claims	2,606	2,522	2,858	2,536
Initial Change (%)	+84 (+3.3%)	-336 (-11.8%)	-549 (-16.1%)	+70 (+2.8%)
Continued Claims	17,201	17,203	17,161	14,987

Virginia Initial Claims by Week: Previous and Current year



Virginia Continued Claims by Week: Previous and Current year



Initial Claims for All States

In the week ending February 1, the advance figure for seasonally adjusted initial claims was 219,000, an increase of 11,000 from the previous week's revised level. The previous week's level was revised up by 1,000 from 207,000 to 208,000. The advance number of actual initial claims under state programs, unadjusted, totaled 239,690 in the week ending February 1, an increase of 11,370 (or 5.0 percent) from the previous week. The seasonal factors had expected a decrease of 208 (or 0.1 percent) from the previous week. There were 234,729 initial claims in the comparable week in 2024.

Initial State Claims (5 largest decreases) (Not Seasonally Adjusted)			
State	Initial Claims (this week)	Initial Claims (prior week)	Change
New Jersey	10,313	11,656	-1,343
Massachusetts	5,704	6,601	-897
Michigan	7,866	8,425	-559
Kentucky	1,763	2,175	-412
Missouri	3,758	4,155	-397

Initial State Claims (5 largest increases) (Not Seasonally Adjusted)			
State	Initial Claims (this week)	Initial Claims (prior week)	Change
New York	19,290	15,198	4,092
California	49,965	45,966	3,999
Georgia	5,533	4,679	854
Wisconsin	6,375	5,526	849
Kansas	2,416	1,614	802

All States Initial Weeks Claimed

An initial claim is a claim filed by an unemployed individual after a separation from an employer. The count of U.S. initial claims for unemployment insurance is a leading economic indicator because it is an indication of emerging labor market conditions in the country.

Below is a color-coded map illustrating the percentage change in initial claims from last week to this week across all states nationwide, derived from the latest U.S Department of Labor Weekly Claims News Release (<https://www.dol.gov/ui/data.pdf>). Green denotes a reduction in continued claims from last week, thus showing improvement, with progressively darker shades of green signifying greater improvement. Purple denotes an increase in continued claims from last week, thus showing deterioration, with progressively darker shades of purple signifying greater deterioration. Very light green, purple or white indicates minimal change from last week. The legend at the bottom provides the color spectrum along with its corresponding percentage value.

