

For Release: Thursday, January 30, 2025

Contact: Virginia Works
Economic Information & Analytics Division
(804) 786-7496
LMI@viriniaworks.gov

Follow us on X (formerly Twitter): [@VirginiaLMI](https://twitter.com/VirginiaLMI).

Virginia's Latest Unemployment Insurance Weekly Initial Claims Down at 2,522; Continued Claims at 17,203

RICHMOND— Virginia Works announced today that 2,522 unemployment insurance weekly **initial claims** were filed during the week ending January 25, 2025, which is 11.8 percent lower than last week's 2,858 claims and 0.7 percent lower than the comparable week of last year (2,541). Nearly 78 percent of claimants self-reported an associated industry; of those reported, the top five industries (59 percent) were Construction (241); Professional, Scientific, and Technical Services (234); Administrative and Support and Waste Management (218); Retail Trade (187); and Health Care and Social Assistance (174).

Continued weeks claims (17,203) were 0.2 percent higher than last week (17,161) and were 17.9 percent higher than the comparable week of last year (14,586). Nearly 92 percent of claimants self-reported an associated industry; of those reported, the top five industries (57 percent) were Professional, Scientific, and Technical Services (2,359); Administrative and Support and Waste Management (2,128); Manufacturing (1,529); Construction (1,512); and Health Care and Social Assistance (1,417).

Significant Layoffs and Announcements are available at the following websites:

[WARN Notices | Virginia Works](#)

[Announcements | Virginia Economic Development Partnership](#)

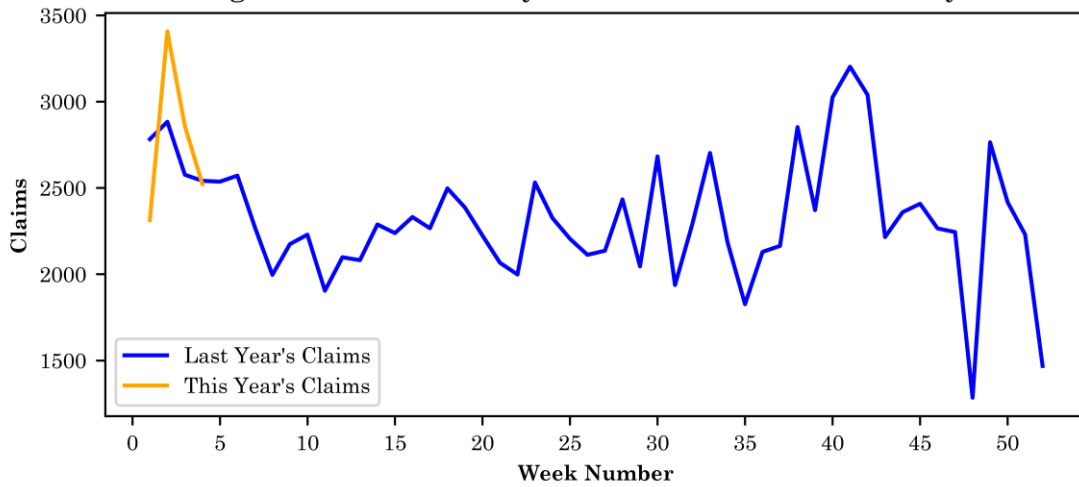
(more)

Richmond, VA

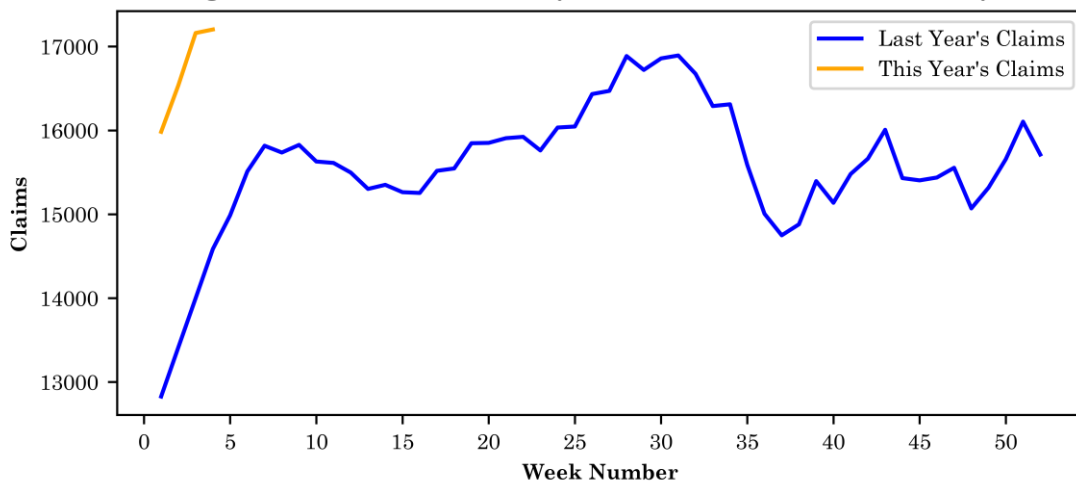
Initial Claims – Comparison of Unemployment Insurance Activity

	Week Ending 01/25/2025	Week Ending 01/18/2025	Week Ending 01/11/2025	Last Year 01/27/2024
Initial Claims	2,522	2,858	3,407	2,541
Initial Change (%)	-336 (-11.8%)	-549 (-16.1%)	+1093 (+47.2%)	-19 (-0.7%)
Continued Claims	17,203	17,161	16,539	14,586

Virginia Initial Claims by Week: Previous and Current year



Virginia Continued Claims by Week: Previous and Current year



Initial Claims for All States

In the week ending January 25, the advance figure for seasonally adjusted initial claims was 207,000, a decrease of 16,000 from the previous week's unrevised level of 223,000. The advance number of actual initial claims under state programs, unadjusted, totaled 227,362 in the week ending January 25, a decrease of 56,963 (or 20.0 percent) from the previous week. The seasonal factors had expected a decrease of 39,917 (or 14.0 percent) from the previous week. There were 263,919 initial claims in the comparable week in 2024.

Initial State Claims (5 largest decreases) (Not Seasonally Adjusted)			
State	Initial Claims (this week)	Initial Claims (prior week)	Change
California	46,490	59,969	-13,479
Michigan	8,412	18,014	-9,602
Missouri	3,985	8,299	-4,314
Illinois	10,403	13,627	-3,224
Texas	14,238	16,915	-2,677

Initial State Claims (5 largest increases) (Not Seasonally Adjusted)			
State	Initial Claims (this week)	Initial Claims (prior week)	Change
Iowa	3,058	2,545	513
Washington	6,230	5,837	393
Wisconsin	5,699	5,375	324
Kansas	1,614	1,547	67
Montana	1,162	1,150	12

All States Initial Weeks Claimed

An initial claim is a claim filed by an unemployed individual after a separation from an employer. The count of U.S. initial claims for unemployment insurance is a leading economic indicator because it is an indication of emerging labor market conditions in the country.

Below is a color-coded map illustrating the percentage change in initial claims from last week to this week across all states nationwide, derived from the latest U.S Department of Labor Weekly Claims News Release (<https://www.dol.gov/ui/data.pdf>). Green denotes a reduction in continued claims from last week, thus showing improvement, with progressively darker shades of green signifying greater improvement. Purple denotes an increase in continued claims from last week, thus showing deterioration, with progressively darker shades of purple signifying greater deterioration. Very light green, purple or white indicates minimal change from last week. The legend at the bottom provides the color spectrum along with its corresponding percentage value.

