

For Release: Thursday, January 23, 2025

Contact: Virginia Works
Economic Information & Analytics Division
(804) 786-7496
LMI@viriniaworks.gov

Follow us on Twitter X: [@VirginiaLMI](https://twitter.com/VirginiaLMI).

Virginia's Latest Unemployment Insurance Weekly Initial Claims at 2,858; Continued Claims at 17,161

RICHMOND— Virginia Works announced today that 2,858 unemployment insurance weekly **initial claims** were filed during the week ending January 18, 2025, which is 16.1 percent lower than last week's 3,407 claims and 10.9 percent higher than the comparable week of last year (2,576). Nearly 79 percent of claimants self-reported an associated industry; of those reported, the top five industries (59 percent) were Manufacturing (318); Construction (298); Administrative and Support and Waste Management (260); Professional, Scientific, and Technical Services (255); and Retail Trade (207).

Continued weeks claims (17,161) were 3.8 percent higher than last week (16,539) and were 22.6 percent higher than the comparable week of last year (13,999). Nearly 91 percent of claimants self-reported an associated industry; of those reported, the top five industries (57 percent) were Professional, Scientific, and Technical Services (2,401); Administrative and Support and Waste Management (2,072); Manufacturing (1,538); Construction (1,425); and Health Care and Social Assistance (1,395).

Significant Layoffs and Announcements are available at the following websites:

[WARN Notices | Virginia Employment Commission](#)

[Announcements | Virginia Economic Development Partnership](#)

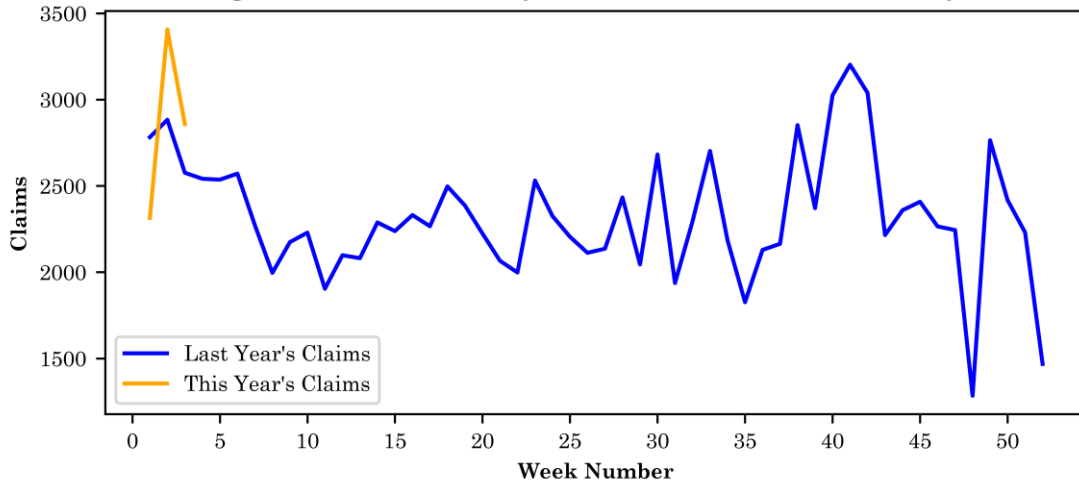
(more)

Richmond, VA

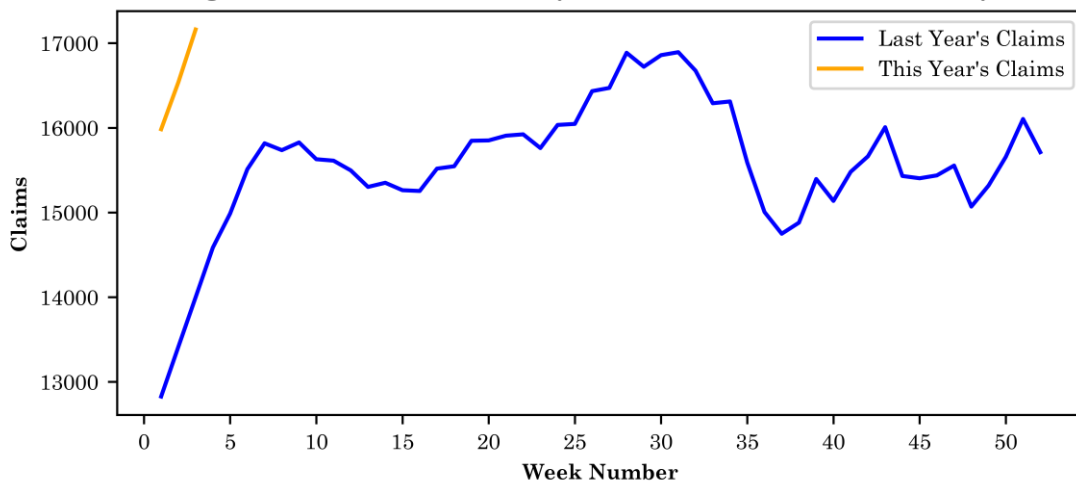
Initial Claims – Comparison of Unemployment Insurance Activity

	Week Ending 01/18/2025	Week Ending 01/11/2025	Week Ending 01/04/2025	Last Year 01/20/2024
Initial Claims	2,858	3,407	2,314	2,576
Initial Change (%)	-549 (-16.1%)	+1093 (+47.2%)	+846 (+57.6%)	+282 (+10.9%)
Continued Claims	17,161	16,539	15,983	13,999

Virginia Initial Claims by Week: Previous and Current year



Virginia Continued Claims by Week: Previous and Current year

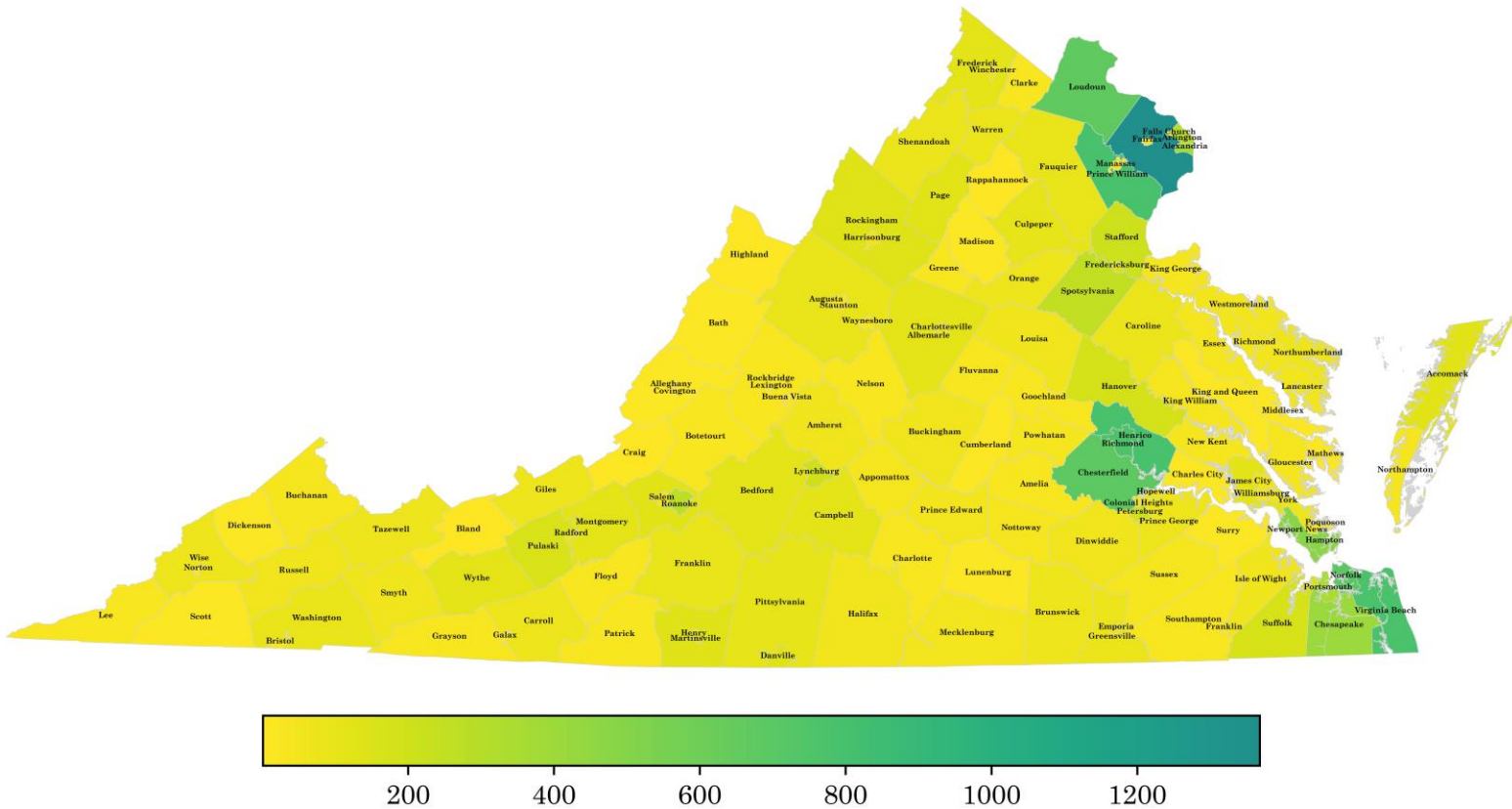


Virginia Continued Weeks Claimed

A person who has already filed an initial claim and who has experienced a week of unemployment files a continued claim to claim benefits for that week of unemployment. On a weekly basis, continued claims reflect a good approximation of the current number of insured unemployed workers filing for UI benefits, and are a good indicator of labor market conditions. While continued claims are not a leading indicator, they provide confirming evidence of the direction of the economy.

The color-coded map below shows the distribution of this week's continued claims for Virginia's counties and cities.

Yellow represents low numbers, while progressively darker shades transitioning from yellow to green and dark green signify increasing numbers of continued claims. The legend located at the bottom provides the color spectrum and its corresponding count of continued claims.



Initial Claims for All States

In the week ending January 18, the advance figure for seasonally adjusted initial claims was 223,000, an increase of 6,000 from the previous week's unrevised level of 217,000. The advance number of actual initial claims under state programs, unadjusted, totaled 284,222 in the week ending January 18, a decrease of 68,135 (or 19.3 percent) from the previous week. The seasonal factors had expected a decrease of 75,722 (or 21.5 percent) from the previous week. There were 249,947 initial claims in the comparable week in 2024.

Initial State Claims (5 largest decreases) (Not Seasonally Adjusted)			
State	Initial Claims (this week)	Initial Claims (prior week)	Change
Michigan	18,340	27,365	-9,025
Texas	16,393	24,238	-7,845
Ohio	8,485	13,940	-5,455
Illinois	13,661	18,931	-5,270
Georgia	6,538	11,484	-4,946

Initial State Claims (5 largest increases) (Not Seasonally Adjusted)			
State	Initial Claims (this week)	Initial Claims (prior week)	Change
California	60,988	54,244	6,744
West Virginia	2,030	1,417	613
Arkansas	1,776	1,570	206
District of Columbia	1,235	1,033	202
Alaska	819	747	72

All States Initial Weeks Claimed

An initial claim is a claim filed by an unemployed individual after a separation from an employer. The count of U.S. initial claims for unemployment insurance is a leading economic indicator because it is an indication of emerging labor market conditions in the country.

Below is a color-coded map illustrating the percentage change in initial claims from last week to this week across all states nationwide, derived from the latest U.S Department of Labor Weekly Claims News Release (<https://www.dol.gov/ui/data.pdf>). Green denotes a reduction in continued claims from last week, thus showing improvement, with progressively darker shades of green signifying greater improvement. Purple denotes an increase in continued claims from last week, thus showing deterioration, with progressively darker shades of purple signifying greater deterioration. Very light green, purple or white indicates minimal change from last week. The legend at the bottom provides the color spectrum along with its corresponding percentage value.

