

**For Release:** Thursday, November 07, 2024

**Contact:** Virginia Works  
Economic Information & Analytics Division  
(804)786-7496  
[LMI@viriniaworks.gov](mailto:LMI@viriniaworks.gov)

Follow us on Twitter X: [@VirginiaLMI](https://twitter.com/VirginiaLMI).

## Virginia's Latest Unemployment Insurance Weekly Initial Claims at 2,359; Continued Claims at 15,431

**RICHMOND**— Virginia Works announced today that 2,359 unemployment insurance weekly **initial claims** were filed during the week ending November 02, 2024, which is 6.5 percent higher than last week's 2,215 claims and 36.4 percent higher than the comparable week of last year (1,730). Nearly 82 percent of claimants self-reported an associated industry; of those reported, the top five industries (60 percent) were Professional, Scientific, and Technical Services (252); Manufacturing (223); Health Care and Social Assistance (220); Administrative and Support and Waste Management (214); and Retail Trade (170).

**Continued weeks claims** (15,431) were 3.6 percent lower than last week (16,007) and were 25.0 percent higher than the comparable week of last year (12,341). Nearly 92 percent of claimants self-reported an associated industry; of those reported, the top five industries (60 percent) were Professional, Scientific, and Technical Services (2,514); Administrative and Support and Waste Management (2,002); Manufacturing (1,447); Health Care and Social Assistance (1,432); and Retail Trade (1,198).

**Significant Layoffs and Announcements are available at the following websites:**

[WARN Notices | Virginia Employment Commission](#)

[Announcements | Virginia Economic Development Partnership](#)

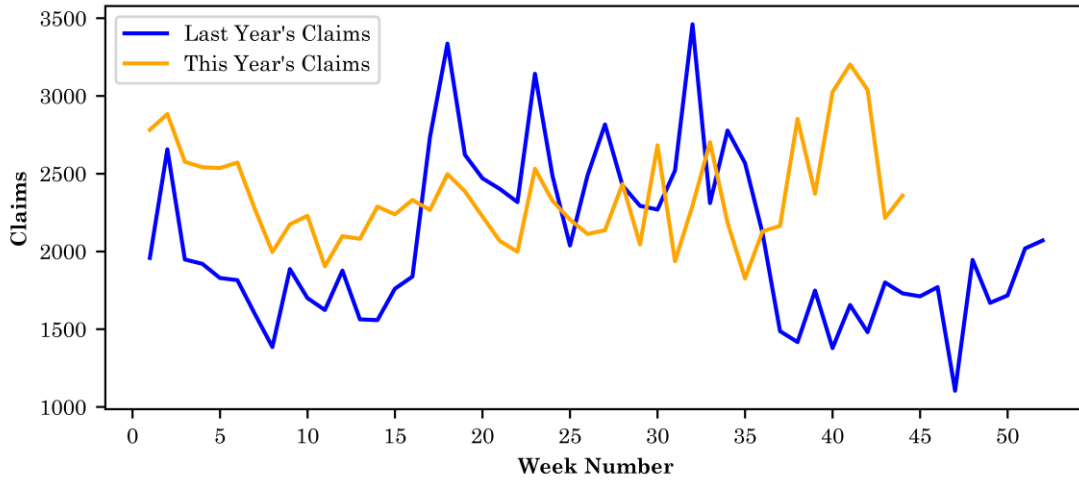
(more)

**Richmond, VA**

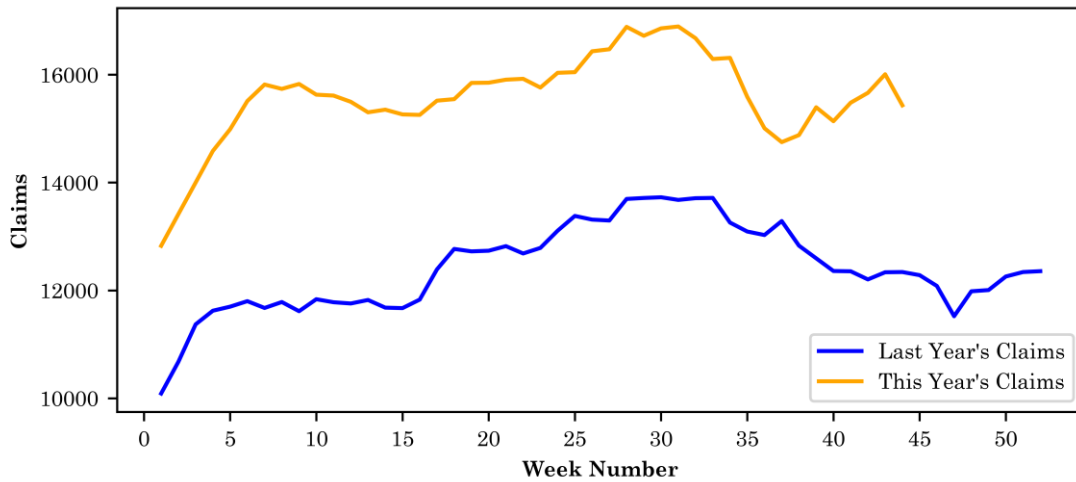
**Initial Claims – Comparison of Unemployment Insurance Activity**

	Week Ending 11/02/2024	Week Ending 10/26/2024	Week Ending 10/19/2024	Last Year 11/04/2023
Initial Claims	2,359	2,215	3,039	1,730
Initial Change (%)	+144 (+6.5%)	-824 (-27.1%)	-163 (-5.1%)	+629 (+36.4%)
Continued Claims	15,431	16,007	15,663	12,341

**Virginia Initial Claims by Week: Previous and Current year**



**Virginia Continued Claims by Week: Previous and Current year**





### Initial Claims for All States

In the week ending November 2, the advance figure for seasonally adjusted initial claims was 221,000, an increase of 3,000 from the previous week's revised level. The previous week's level was revised up by 2,000 from 216,000 to 218,000. The advance number of actual initial claims under state programs, unadjusted, totaled 212,274 in the week ending November 2, an increase of 10,827 (or 5.4 percent) from the previous week. The seasonal factors had expected an increase of 8,058 (or 4.0 percent) from the previous week. There were 214,161 initial claims in the comparable week in 2023.

<b>Initial State Claims (5 largest decreases)</b> (Not Seasonally Adjusted)			
State	Initial Claims (this week)	Initial Claims (prior week)	Change
Florida	6,590	8,371	-1,781
Georgia	4,602	6,119	-1,517
Missouri	2,566	3,357	-791
Washington	6,436	6,833	-397
Arizona	2,649	3,004	-355

<b>Initial State Claims (5 largest increases)</b> (Not Seasonally Adjusted)			
State	Initial Claims (this week)	Initial Claims (prior week)	Change
California	43,132	38,854	4,278
Michigan	11,782	8,219	3,563
Ohio	8,111	6,184	1,927
New Jersey	9,339	8,347	992
Kansas	1,977	1,121	856

## All States Initial Weeks Claimed

An initial claim is a claim filed by an unemployed individual after a separation from an employer. The count of U.S. initial claims for unemployment insurance is a leading economic indicator because it is an indication of emerging labor market conditions in the country.

Below is a color-coded map illustrating the percentage change in initial claims from last week to this week across all states nationwide, derived from the latest U.S Department of Labor Weekly Claims News Release (<https://www.dol.gov/ui/data.pdf>). Green denotes a reduction in continued claims from last week, thus showing improvement, with progressively darker shades of green signifying greater improvement. Purple denotes an increase in continued claims from last week, thus showing deterioration, with progressively darker shades of purple signifying greater deterioration. Very light green, purple or white indicates minimal change from last week. The legend at the bottom provides the color spectrum along with its corresponding percentage value.

