

**For Release:** Thursday, October 24, 2024

**Contact:** Virginia Works  
Economic Information & Analytics Division  
(804)786-7496  
[LMI@viriniaworks.gov](mailto:LMI@viriniaworks.gov)

Follow us on Twitter X: [@VirginiaLMI](https://twitter.com/VirginiaLMI).

## Virginia's Latest Unemployment Insurance Weekly Initial Claims at 3,039; Continued Claims at 15,663

**RICHMOND**— Virginia Works announced today that 3,039 unemployment insurance weekly **initial claims** were filed during the week ending October 19, 2024, which is 5.1 percent lower than last week's 3,202 claims and 105.2 percent higher than the comparable week of last year (1,481). Nearly 83 percent of claimants self-reported an associated industry; of those reported, the top five industries (69 percent) were Manufacturing (673); Professional, Scientific, and Technical Services (315); Administrative and Support and Waste Management (269); Retail Trade (221); and Health Care and Social Assistance (206).

**Continued weeks claims** (15,663) were 1.2 percent higher than last week (15,480) and were 28.3 percent higher than the comparable week of last year (12,204). Nearly 93 percent of claimants self-reported an associated industry; of those reported, the top five industries (61 percent) were Professional, Scientific, and Technical Services (2,516); Administrative and Support and Waste Management (1,993); Manufacturing (1,729); Health Care and Social Assistance (1,447); and Retail Trade (1,157).

**Significant Layoffs and Announcements are available at the following websites:**

[WARN Notices | Virginia Employment Commission](#)

[Announcements | Virginia Economic Development Partnership](#)

(more)

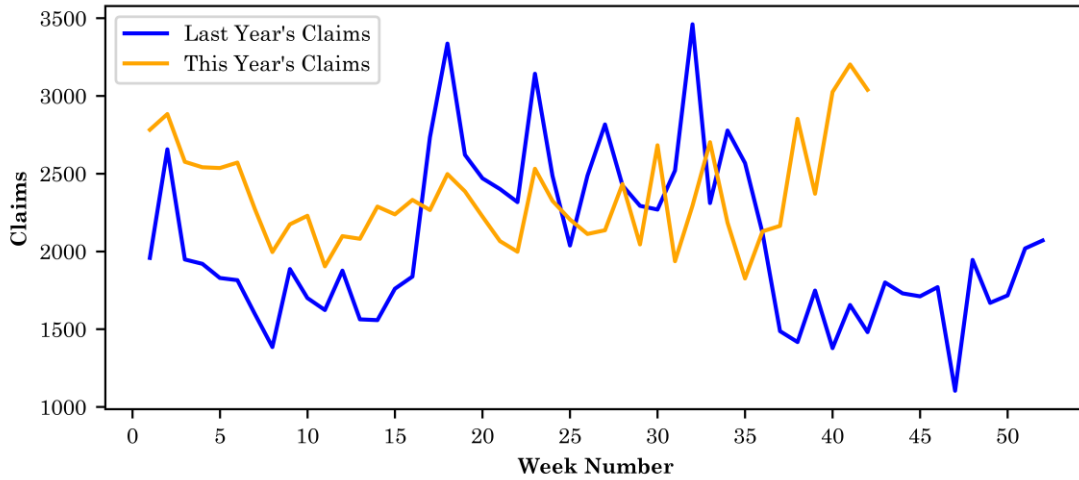
**Richmond, VA**

Page 1 of 5

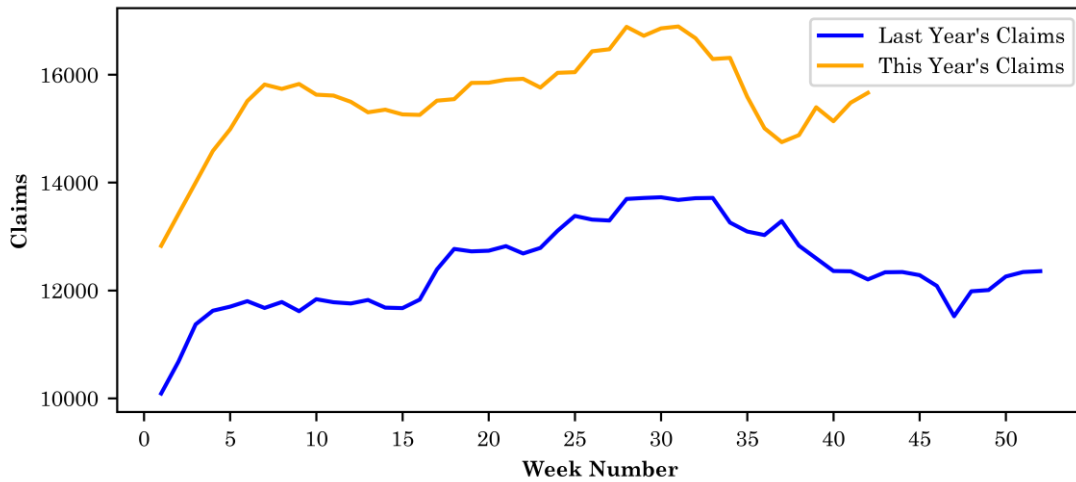
### Initial Claims – Comparison of Unemployment Insurance Activity

	Week Ending 10/19/2024	Week Ending 10/12/2024	Week Ending 10/05/2024	Last Year 10/21/2023
Initial Claims	3,039	3,202	3,025	1,481
Initial Change (%)	-163 (-5.1%)	+177 (+5.9%)	+654 (+27.6%)	+1558 (+105.2%)
Continued Claims	15,663	15,480	15,137	12,204

**Virginia Initial Claims by Week: Previous and Current year**



**Virginia Continued Claims by Week: Previous and Current year**

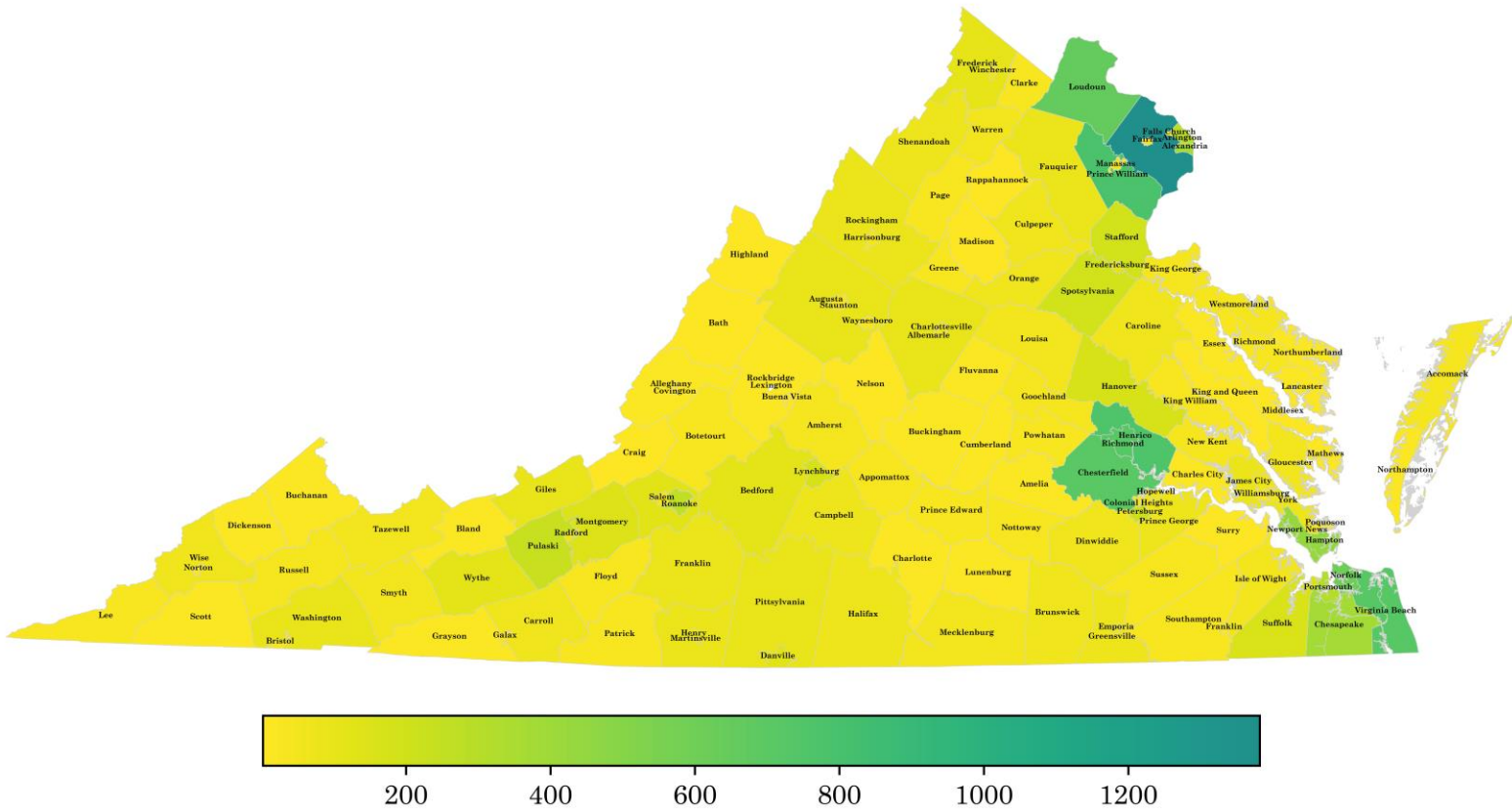


# Virginia Continued Weeks Claimed

A person who has already filed an initial claim and who has experienced a week of unemployment files a continued claim to claim benefits for that week of unemployment. On a weekly basis, continued claims reflect a good approximation of the current number of insured unemployed workers filing for UI benefits, and are a good indicator of labor market conditions. While continued claims are not a leading indicator, they provide confirming evidence of the direction of the economy.

The color-coded map below shows the distribution of this week's continued claims for Virginia's counties and cities.

Yellow represents low numbers, while progressively darker shades transitioning from yellow to green and dark green signify increasing numbers of continued claims. The legend located at the bottom provides the color spectrum and its corresponding count of continued claims.



### Initial Claims for All States

In the week ending October 19, the advance figure for seasonally adjusted initial claims was 227,000, a decrease of 15,000 from the previous week's revised level. The previous week's level was revised up by 1,000 from 241,000 to 242,000. The advance number of actual initial claims under state programs, unadjusted, totaled 202,635 in the week ending October 19, a decrease of 22,634 (or 10.0 percent) from the previous week. The seasonal factors had expected a decrease of 9,426 (or 4.2 percent) from the previous week. There were 193,999 initial claims in the comparable week in 2023.

<b>Initial State Claims (5 largest decreases)</b> (Not Seasonally Adjusted)			
<b>State</b>	<b>Initial Claims (this week)</b>	<b>Initial Claims (prior week)</b>	<b>Change</b>
North Carolina	6,402	9,290	-2,888
New York	12,170	14,874	-2,704
Texas	13,718	15,780	-2,062
Georgia	6,115	8,166	-2,051
Ohio	5,394	7,310	-1,916

<b>Initial State Claims (5 largest increases)</b> (Not Seasonally Adjusted)			
<b>State</b>	<b>Initial Claims (this week)</b>	<b>Initial Claims (prior week)</b>	<b>Change</b>
Florida	10,574	6,299	4,275
Kansas	1,394	1,081	313
Wisconsin	3,850	3,600	250
Alaska	799	627	172
Oregon	3,997	3,826	171

## All States Initial Weeks Claimed

An initial claim is a claim filed by an unemployed individual after a separation from an employer. The count of U.S. initial claims for unemployment insurance is a leading economic indicator because it is an indication of emerging labor market conditions in the country.

Below is a color-coded map illustrating the percentage change in initial claims from last week to this week across all states nationwide, derived from the latest U.S Department of Labor Weekly Claims News Release (<https://www.dol.gov/ui/data.pdf>). Green denotes a reduction in continued claims from last week, thus showing improvement, with progressively darker shades of green signifying greater improvement. Purple denotes an increase in continued claims from last week, thus showing deterioration, with progressively darker shades of purple signifying greater deterioration. Very light green, purple or white indicates minimal change from last week. The legend at the bottom provides the color spectrum along with its corresponding percentage value.

